



SUZUKI
MARINE

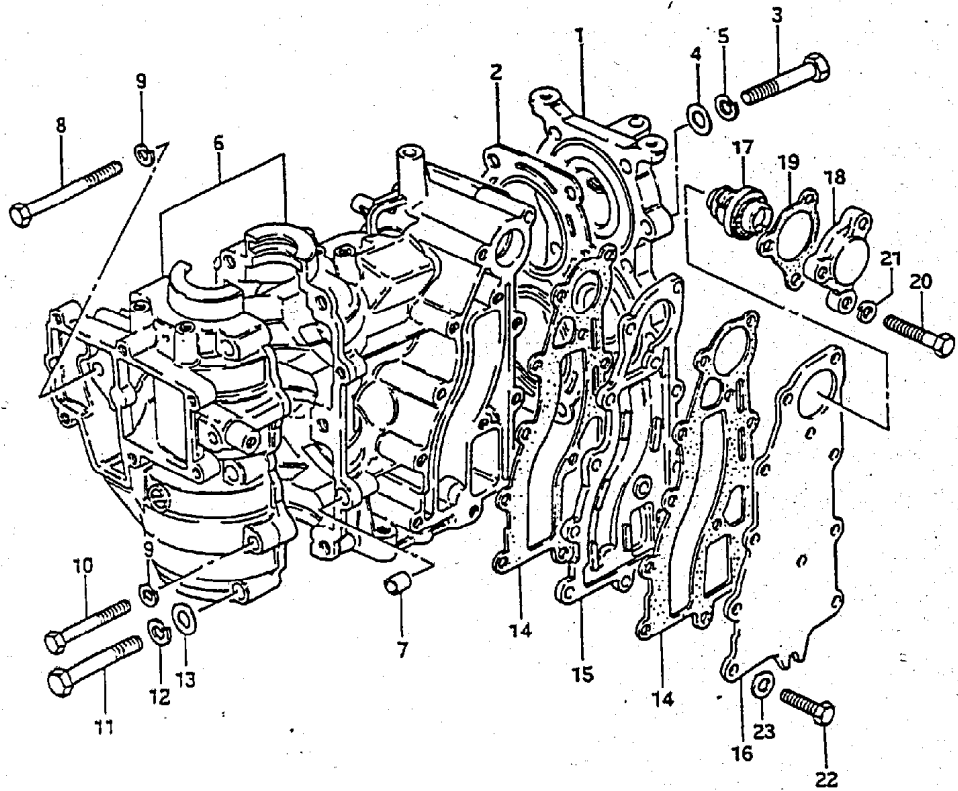
Parts Book
DT9.9 86-87

FIG.1

FIG.1 (B-2) CYLINDER

Q'TY

REMARKS



REF.NO.	PART NO.	DESCRIPTION	Q'TY	REMARKS
1-1	11110-93930-02M	CYLINDER HEAD	1	DT9.9
1-2	11110-93900-02M	CYLINDER HEAD	1	model VG:DT15
1-3	11110-93930-02M	CYLINDER HEAD	1	model VH:DT15
2	11141-93901	GASKET, cylinder head	1	
3	01107-08402	BOLT	10	
4	08322-21082	WASHER	10	
5	08321-21082	LOCK WASHER	10	
6-1	11301-93930-02M	CYLINDER ASSY	1	DT9.9
6-2	11301-93901-02M	CYLINDER ASSY	1	DT15
7	04211-09109	.KNOCK PIN	2	
8	01107-06652	.BOLT (6x65)	2	
9	08321-21062	.LOCK WASHER	4	
10	01107-06452	.BOLT	2	
11	01107-08452	.BOLT	6	
12	08321-21082	.LOCK WASHER	6	
13	08322-11082	.WASHER	6	
14	14151-93901	GASKET, exhaust cover	2	
15	14131-93900	PLATE, exhaust cover	1	
16-1	14141-93950-02M	COVER, exhaust	1	DT9.9:-620881 DT15:-615538
16-2	14141-93951-02M	COVER, exhaust	1	DT9.9:620882- DT15:615539-
17	17670-93962	THERMOSTAT (50°C)	1	
18	17681-93951-02M	COVER, thermostat	1	
19	17685-93950	GASKET, thermostat cover	1	
20	01107-06352	BOLT	3	
21	08321-21062	LOCK WASHER	3	
22	01107-06252	BOLT	9	
23	08322-21062	WASHER	9	
24	11400-93894	GASKET SET	1	OPT



FIG.2

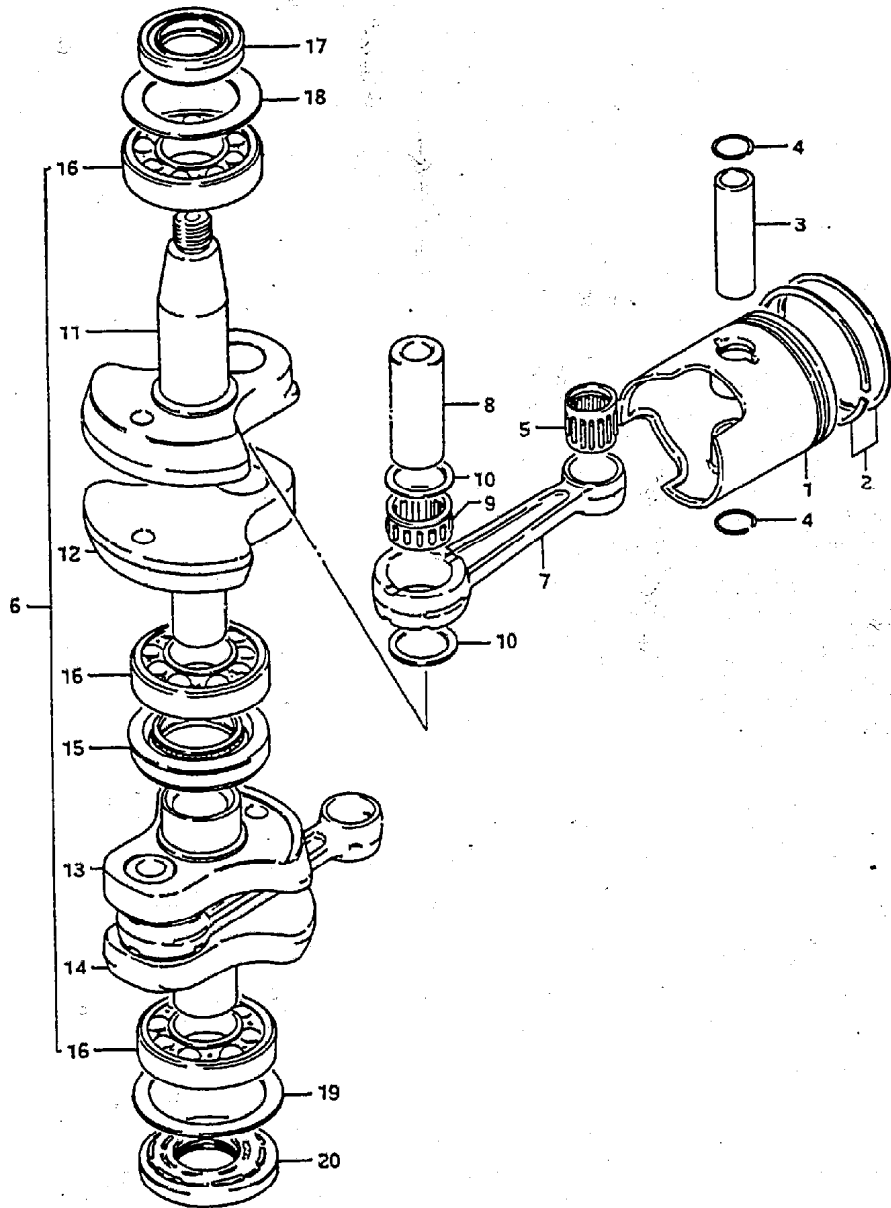


FIG.2 (B- 3) CRANKSHAFT

Q'TY

REMARKS

REF.NO.	PART NO.	DESCRIPTION	Q'TY	REMARKS
1-1	12110-93130	PISTON	2	
1-2	12110-93130-025	PISTON (OS:0.25)	2	OPT
1-3	12110-93130-050	PISTON (OS:0.50)	2	OPT
2-1	12140-93121	RING SET, piston	2	
2-2	12140-93121-025	RING SET, piston (OS:0.25)	2	OPT
2-3	12140-93121-050	RING SET, piston (OS:0.50)	2	OPT
3	12151-93100	PIN, piston	2	
4	09381-14001	SNAP RING	4	
5	09263-14019	BEARING (14x18x19.8)	2	
6	12200-93904	CRANKSHAFT ASSY	1	
7	12161-93902	.ROD, connecting	2	
8	12211-93900	.PIN, crank	2	
9	09263-20051	.BEARING	2	
10	09160-20052	.THRUST WASHER	4	
11	12221-93902	.CRANKSHAFT, upper	1	
12	12231-93901	.WHEEL, middle upper	1	
13	12232-93900	.WHEEL, middle under	1	
14	12240-93900	.CRANKSHAFT, under	1	
15	09289-30008	.OIL SEAL	1	
16	09262-25078	.BEARING (25x52x15)	3	
17	09283-25035	OIL SEAL (25x40x7)	1	
18	09160-36003	THRUST WASHER	1	
19	09160-46004	THRUST WASHER	1	
20	09283-25075	OIL SEAL (24x52x7)	1	

FIG.3

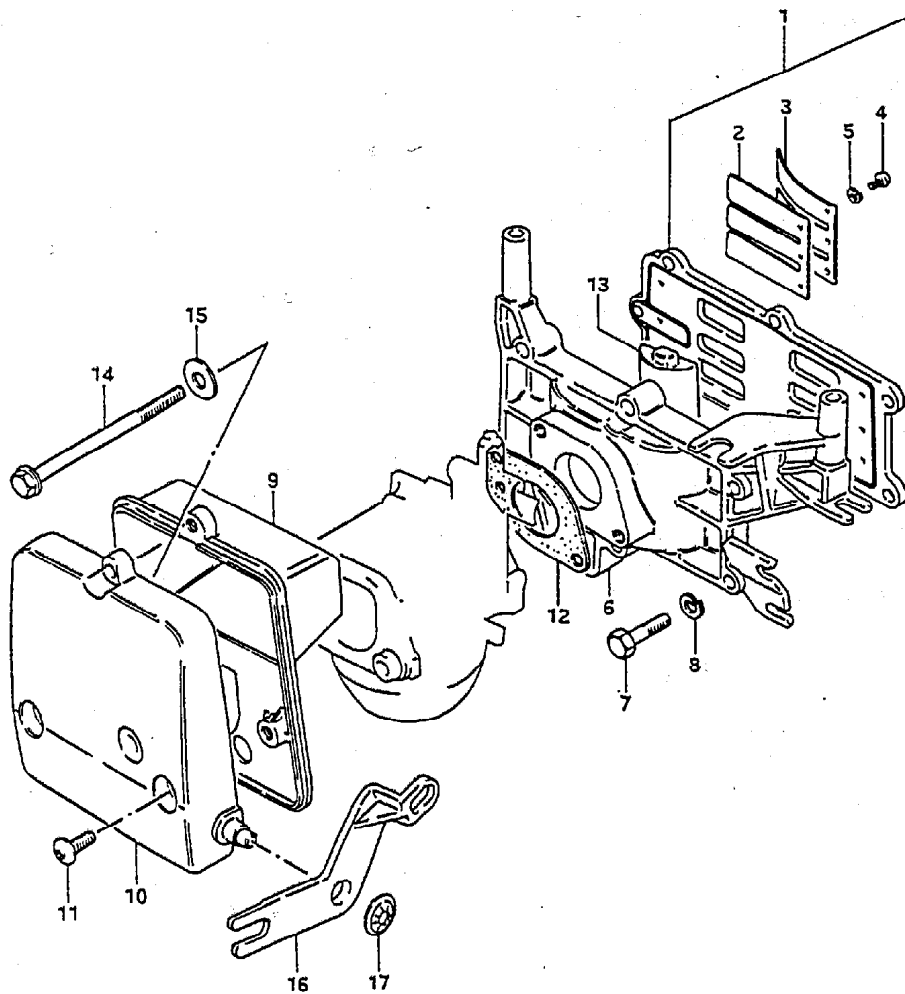


FIG.3 (B- 4) INLET CASE

Q'TY

REMARKS

REF.NO.	PART NO.	DESCRIPTION	Q'TY	REMARKS
1-1	13150-93920	REED VALVE ASSY	1	DT9.9
1-2	13150-93900	REED VALVE ASSY	1	DT15
2	13153-93900	.REED VALVE	2	
3-1	13152-93920	.STOPPER, reed valve	2	DT9.9
3-2	13152-93900	.STOPPER, reed valve	2	DT15
4	02112-03068	.SCREW	6	
5	08321-21067	.LOCK WASHER	6	
6-1	12481-93901-02M	CASE, inlet	1	model VG
6-2	12481-93910-02M	CASE, inlet	1	model VH
7	01107-06352	BOLT (6x35)	6	
8	08321-21062	LOCK WASHER	6	
9	13811-93950	CASE, silencer	1	
10	13812-93900	COVER, silencer	1	
11	03242-05169	SCREW	3	
12	13125-93950	GASKET, carburetor	1	
13	12485-93900	PIECE, inlet case	1	
14	01517-06902	BOLT	2	
15	09160-06066	WASHER (6.5x20x1.6)	2	
16	13633-93900	LEVER, choke	1	
17	09148-06008	NUT	1	

DT9.9/15 VH E3

FIG.4

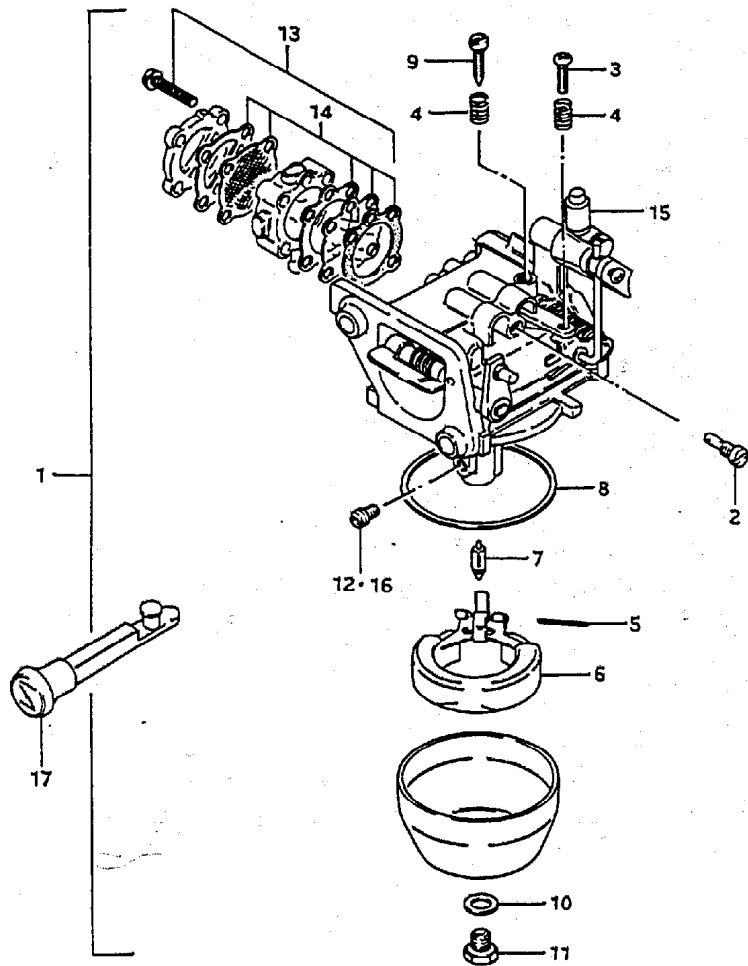


FIG.4 (B- 5) CARBURETOR

Q'TY

REF.NO.	PART NO.	DESCRIPTION	Q'TY	REMARKS
1-1	13200-93912	CARBURETOR ASSY	1	model VG:DT9.9
1-2	13200-91D10	CARBURETOR ASSY	1	model VH:DT9.9
1-3	13200-93902	CARBURETOR ASSY	1	model VG:DT15
1-4	13200-91D00	CARBURETOR ASSY	1	model VH:DT15
2-1	09492-52002	.JET, pilot (52.5)	1	model VG:DT9.9
2-2	09492-62001	.JET, pilot (62.5)	1	model VH:DT9.9
2-3	09492-57003	.JET, pilot (57.5)	1	DT15
3	13661-93900	.SCREW, pilot	1	
4	13268-96110	.SPRING, throttle	2	
5	13254-98100	.PIN, float	1	
6	13250-98110	.FLOAT	1	
7	13371-98100	.NEEDLE	1	
8	13251-98100	.GASKEY, float chamber	1	
9-1	13267-93900	.SCREW, throttle stop	1	model VG
9-2	13267-93910	.SCREW	1	model VH
10	13343-98100	.GASKEY	1	
11	13613-98100	.BOLT	1	
12-1	09491-22010	.JET, main (110)	1	DT9.9
12-2	09491-24015	.JET, main (122.5)	1	model VG:DT15
12-3	09491-25002	.JET, main (125)	1	model VH:DT15
13	15100-93900	.PUMP ASSY, set	1	
14	15170-93900	.DIAPHRAGM SET	1	
15	13521-93900	.RING	1	
16-1	09491-27006	JET, main (115)	1	OPT
16-2	09491-20010	JET, main (100)	1	OPT
16-3	09491-95007	JET, main (95)	1	OPT
16-4	09491-26009	JET, main (130)	1	OPT
16-5	09491-23013	JET, main (117.5)	1	OPT
16-6	09491-22011	JET, main (112.5)	1	OPT
17	13631-93900	KNOB, choke lever	1	

FWG

FIG.5

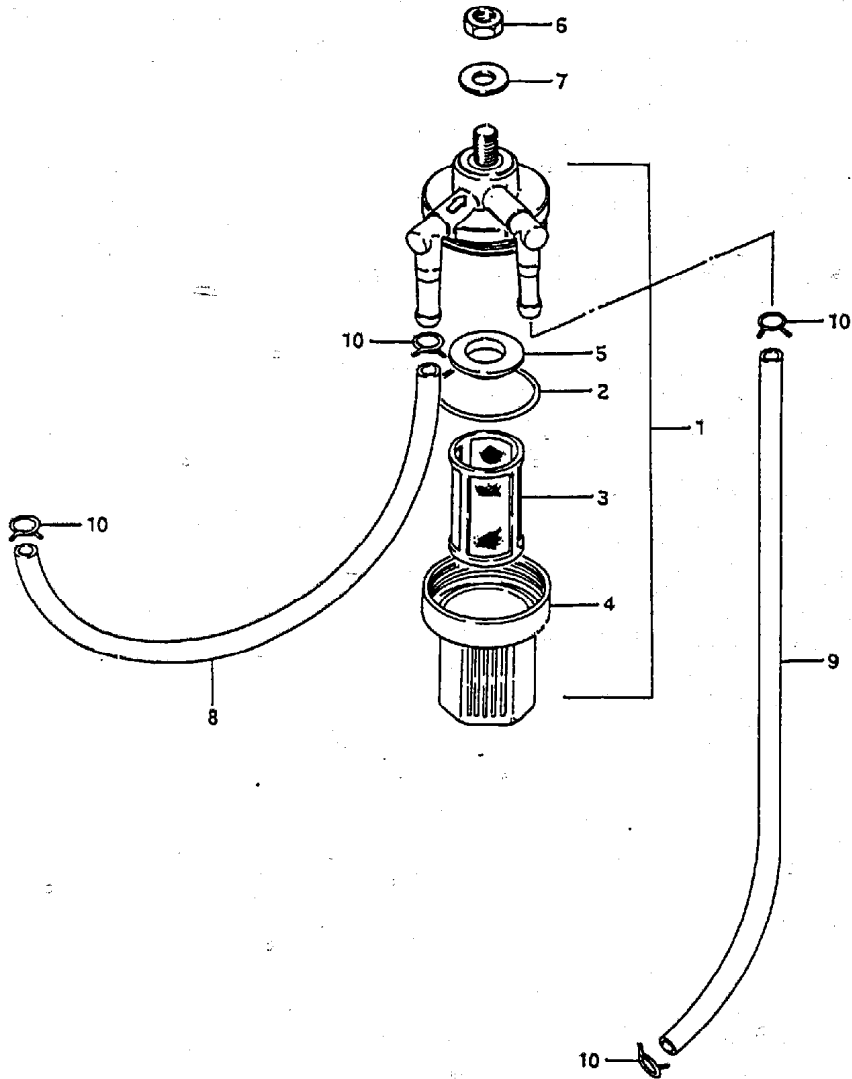


FIG.5 (B- 6) FUEL PUMP

REF.NO.	PART NO.	DESCRIPTION	Q'TY	REMARKS
1	15410-93400	FILTER, fuel	1	
2	15415-93400	O-RING	1	
3	15412-93400	STRAINER	1	
4	15413-93400	CUP	1	
5	15416-93400	PACKING, filter	1	
6	08310-22082	NUT	1	
7	08322-21082	WASHER	1	
8	09343-05137	HOSE (CONN+FILTER)	1	L:500+127
9	09343-05137	HOSE (FILTER+PUMP)	1	L:500+270
10	09401-08410	CLIP	4	

FIG.6

FIG.6 (B- 7) WATER PUMP

Q'TY

REMARKS

REF.NO.	PART NO.	DESCRIPTION	Q'TY	REMARKS
1	17411-93901	CASE, water pump	1	
2	17461-93901	IMPELLER, water pump	1	
3	17471-93902	PANEL, pump case under	1	
4	17472-93901	GASKET, case under	1	
5-1	17561-93910	TUBE, water (S)	1	
5-2	17561-93900	TUBE, water (L)	1	
6	17563-93900	RUBBER, water tube upper	1	
7	17564-93900	BUSH, water pump case	1	
8	17417-93900	GROMMET, pump case	1	
9	17562-93900	GROMMET	1	
10	09202-04014	PIN	2	
11	09100-08222	BOLT (8x55)	4	
12	09160-08015	WASHER (8.5x16x1.2)	4	
13	17462-93990	KEY	1	
14	17450-93910	HOUSING, water inlet	1	
15	09289-12003	.OIL SEAL	1	
16	17453-93900	.DRAIN, water inlet	1	
17	17452-93901	GASKET	1	
18	17520-93900	TUBE, water inlet	1	
19	09100-06106	BOLT	1	
20	09308-10010	GROMMET	1	
21	09308-10011	GROMMET	1	
22	17400-93950	KIT, water pump repair	1	OPY

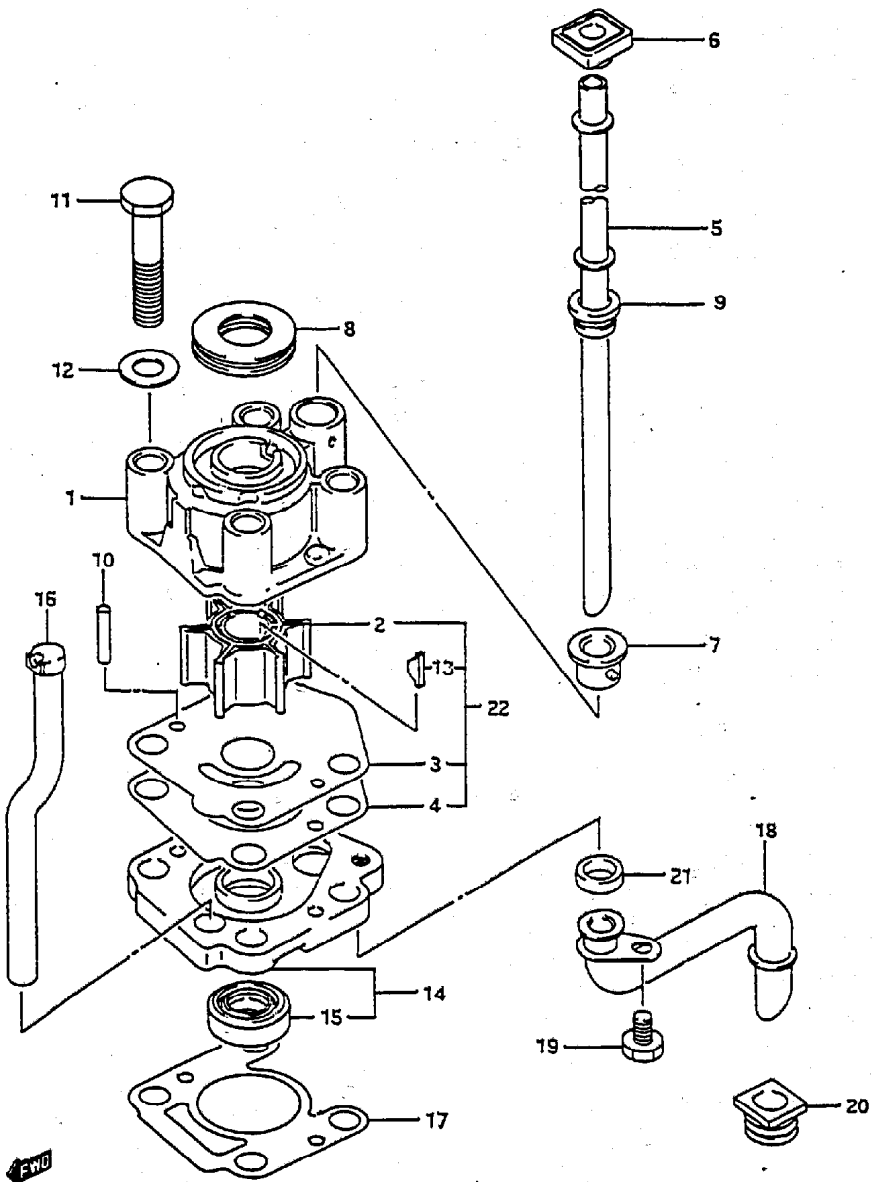
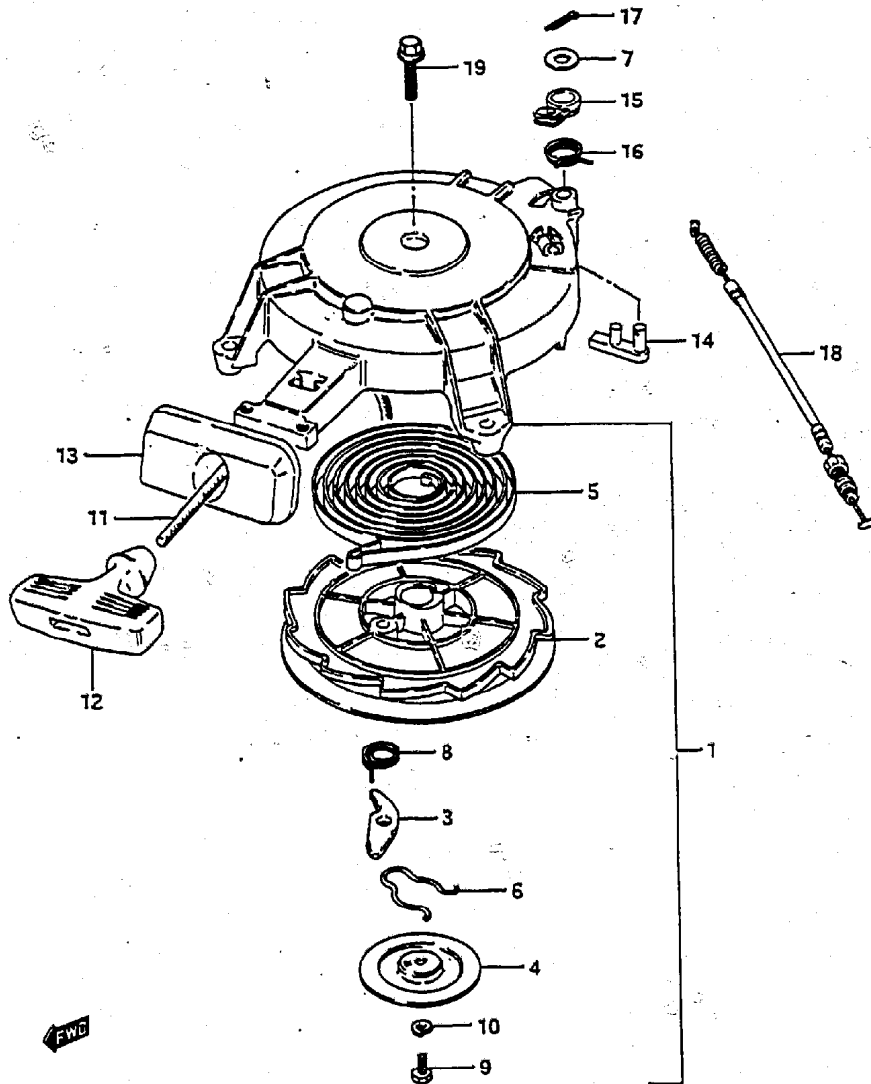


FIG. 7

FIG. 7 (B- 8) STARTER

Q'TY

REMARKS



REF.NO.	PART NO.	DESCRIPTION	Q'TY	REMARKS
1	18100-93901	STARTER, recoil	1	
2	18120-93900	.DRUM, sheave	1	
3	18131-93900	.PAWL, drive	1	
4	18151-93900	.PLATE	1	
5	18142-93900	.SPRING	1	
6	18153-93900	.SPRING	1	
7	18335-96300	.WASHER	1	
8	18155-88520	.SPRING	1	
9	01107-06167	.BOLT	1	
10	08321-31067	.LOCK WASHER	1	
11	18200-93900	.GRIP ASSY	1	
12	18210-93001	..GRIP	1	
13	18181-93900	.GUIDE, rope	1	
14	18281-96300	.REEL, stopper	1	
15	18282-93900	.ARM, stopper	1	
16	18284-93900	.SPRING	1	
17	18348-96300	.PIN	1	
18	18292-93900	.CABLE NSI (L:315)	1	
19	01517-06302	BOLT	3	

FIG. 8

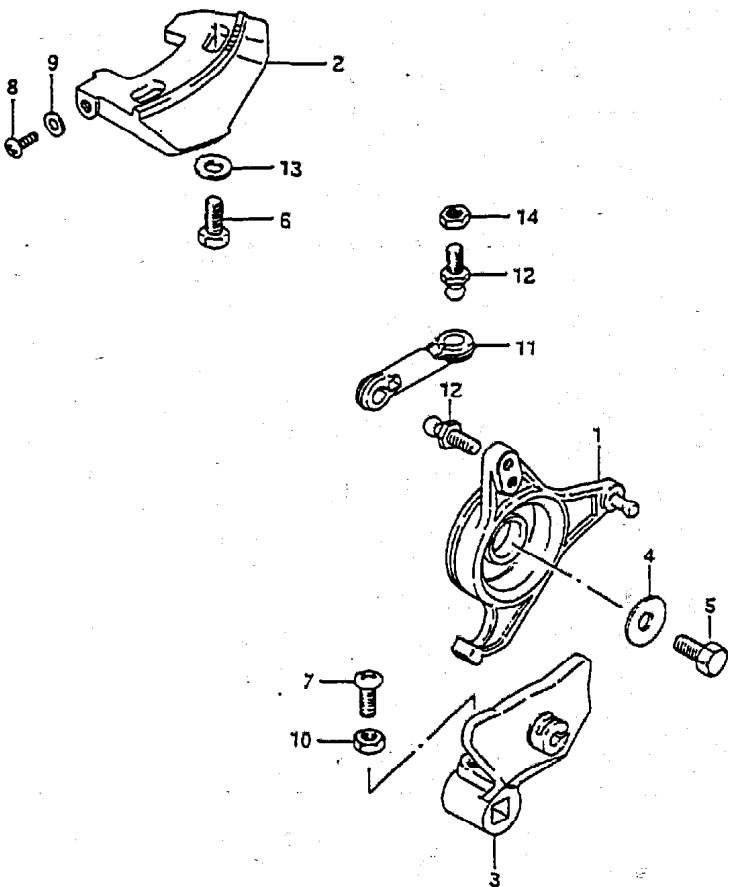


FIG. 8 (B- 9) THROTTLE CONTROL

Q'TY

REF.NO.	PART NO.	DESCRIPTION	Q'TY	REMARKS
1	19121-93901	LEVER, throttle	1	
2-1	19141-93901	CAM, throttle	1	model VG
2-2	19141-93910	CAM, throttle	1	model VH
3	19811-93900	LIMITER, throttle	1	
4	09160-06046	WASHER (6.5x20x1.5)	1	
5	01107-06122	BOLT	1	
6	01107-05162	BOLT	2	
7	02112-05162	SCREW	1	
8	02112-06202	SCREW	1	
9	08322-21062	WASHER	1	
10	08310-11052	NUT	1	
11	19132-94501	CONNECTOR	1	
12	09119-05010	BALL PIVOT	2	
13	08322-21062	WASHER	2	
14	09140-05001	NUT	1	

FIG.9

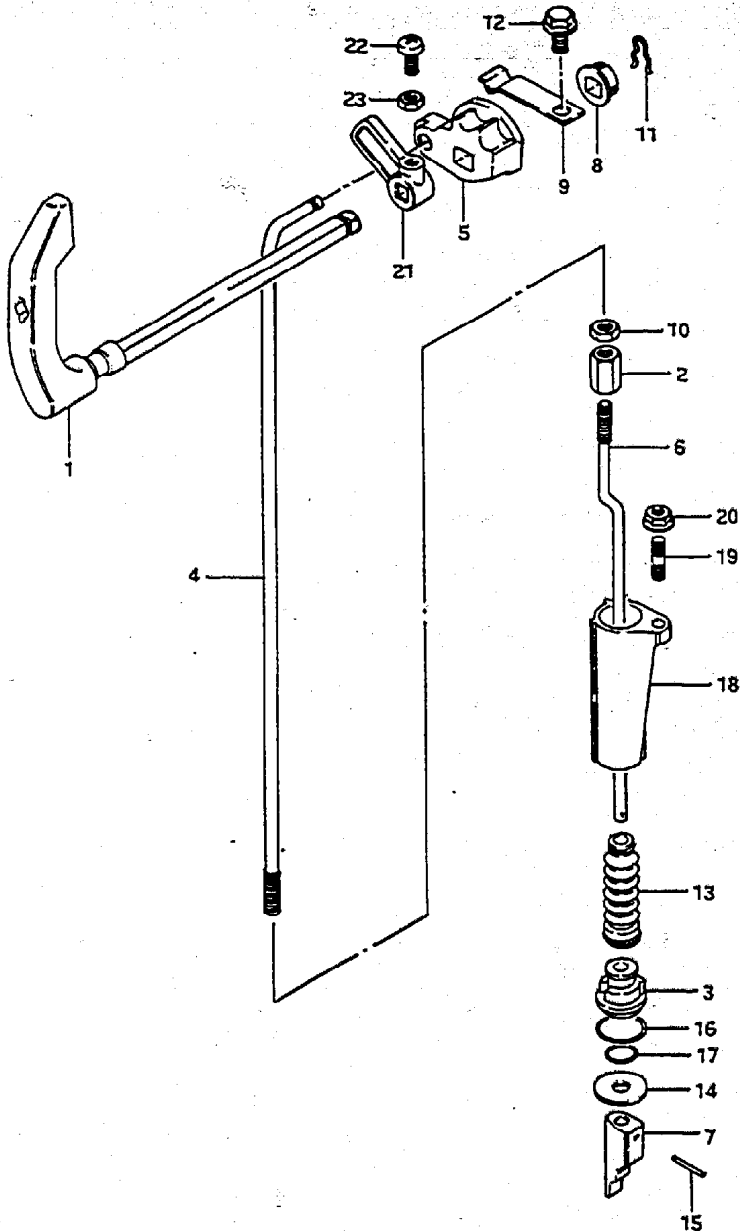


FIG.9 (B-10) CLUTCH

Q'TY

REMARKS

REF.NO.	PART NO.	DESCRIPTION	Q'TY	REMARKS
1	21110-93911	LEVER, clutch	1	
2	23311-94300	TURNBUCKLE, clutch rod	1	
3	25211-93900	GUIDE, shift rod	1	
4	23111-93901	ROD, clutch	1	
5	23211-93900	ARM, clutch rod	1	
6-1	25111-93910	ROD, shift (S) L:245	1	
6-2	25111-93900	ROD, shift (L) L:372	1	
7	25311-93900	CAM, shift	1	
8	21220-93900	BUSH, clutch lever	1	
9	23213-93900	SPRING, notch plate	1	
10	09140-06004	NUT	1	
11	09384-06003	SNAP RETAINER	1	
12	01517-06128	BOLT	1	
13	25222-93901	BOOT, shift rod	1	
14	09160-05005	WASHER (5.5x24x1.6)	1	
15	09205-02006	SPRING PIN	2	
16	09280-05005	O RING	1	
17	09280-19006	O RING	1	
18	25205-93901	COLLAR, shift rod	1	
19	09108-05007	STUD BOLT	1	
20	09159-05015	NUT	1	
21	21313-93900	ARM, electrical NSI	1	
22	02112-05162	SCREW	1	
23	08310-11052	NUT	1	

FIG. 10

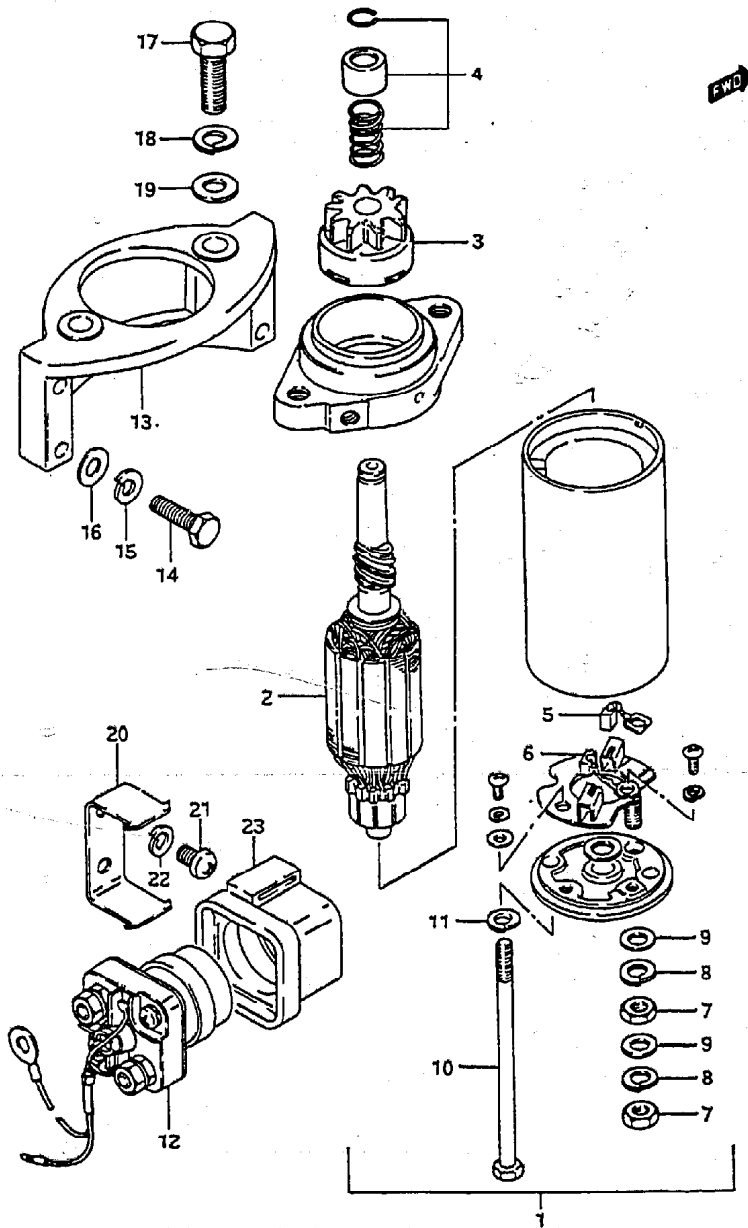


FIG.10 (C- 2) STARTING MOTOR

Q'TY

REMARKS

REF.NO.	PART NO.	DESCRIPTION	Q'TY	REMARKS
1	31100-93531	MOTOR ASSY, starting	1	
2	31311-93530	.ARMATURE, starter	1	
3	31320-93530	.PINION ASSY	1	
4	31312-93530	.STOPPER SET, pinion	1	
5	31131-93530	.BRUSH, (+)	1	
6	31132-93530	.BRUSH, (-)	1	
7	08310-22067	.NUT	2	
8	08321-21067	.LOCK WASHER	2	
9	08322-21067	.WASHER	2	
10	31281-93530	.BOLT, starter housing	2	
11	08321-21057	.LOCK WASHER	2	
12	31800-94400	RELAY, starter	1	
13	31911-93902-02M	BRACKET, starter	1	
14	01107-06257	BOLT	4	
15	08321-21067	LOCK WASHER	4	
16	08322-11068	WASHER	4	
17	01107-08258	BOLT	2	
18	08321-21088	LOCK WASHER	2	
19	08322-11088	WASHER	2	
20	31805-95501	BRACKET, motor relay	1	
21	02112-05088	SCREW	2	
22	08321-21057	LOCK WASHER	2	
23	38422-94510	DAMPER, starter relay	1	

FIG. 11

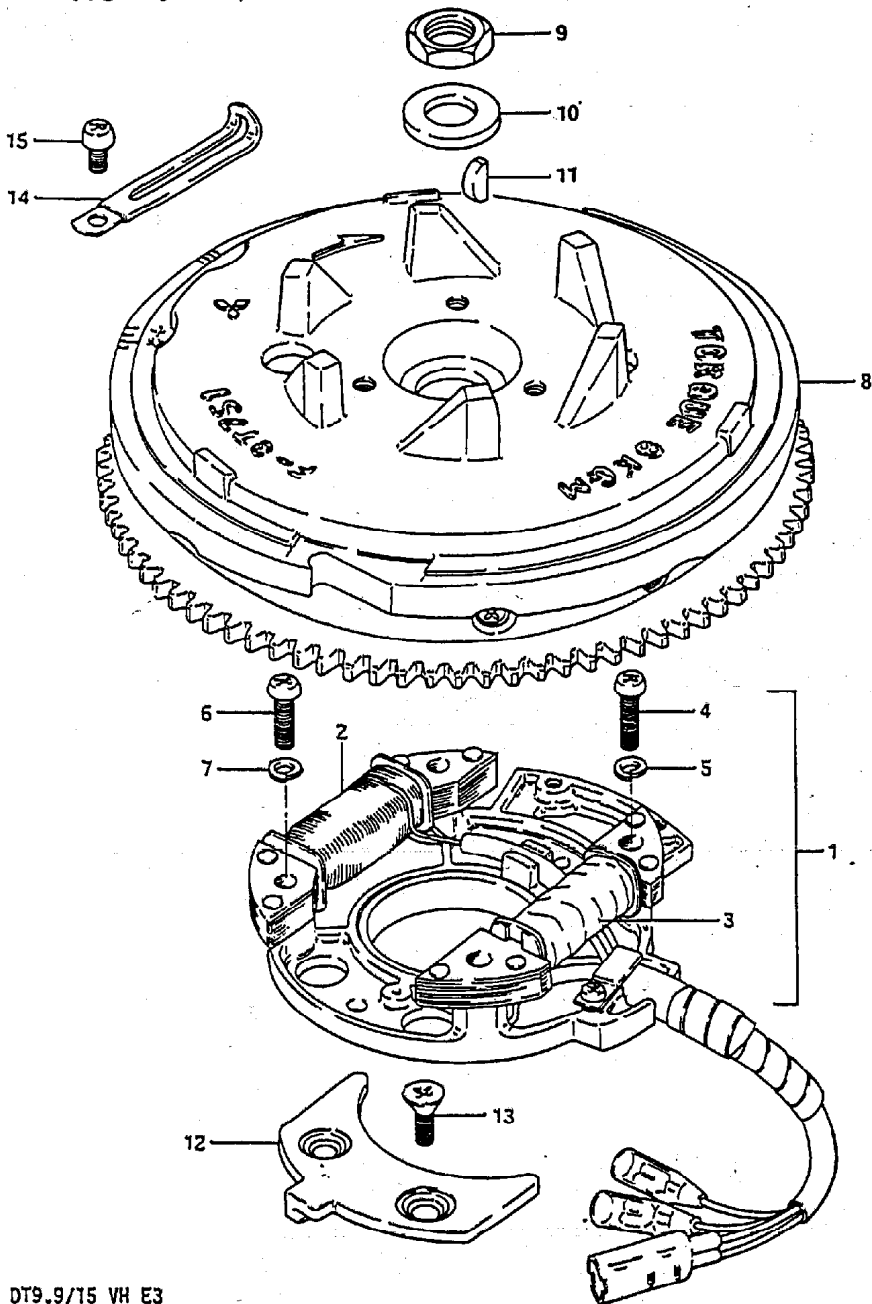


FIG. 11 (C- 3) MAGNETO

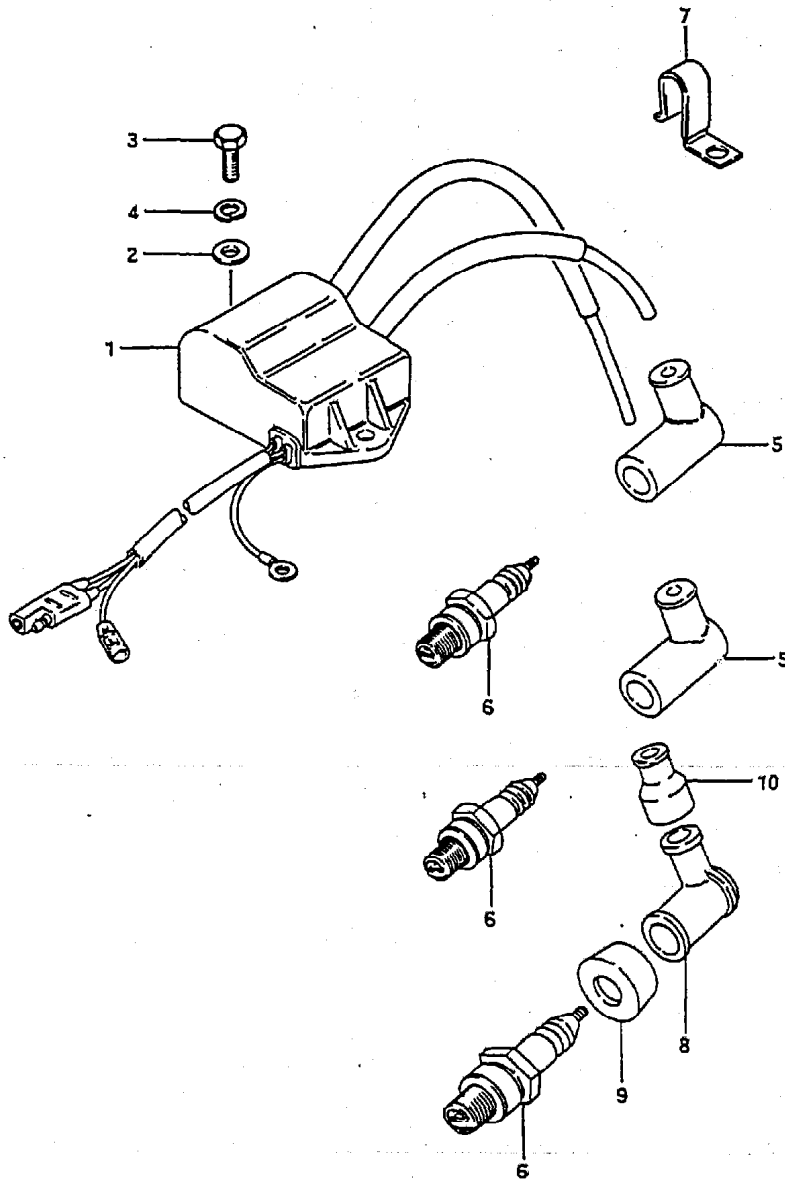
Q'TY

REMARKS

REF. NO.	PART NO.	DESCRIPTION	Q'TY	REMARKS
1	32101-93911	STARTER ASSY	1	
2	32120-93921	.COIL, lighting	1	
3	32140-93900	.COIL, ignition primary	1	
4	02112-06258	.SCREW	2	
5	08321-21067	.LOCK WASHER	2	
6	02112-04068	.SCREW	2	
7	08321-21047	.LOCK WASHER	2	
8	32102-93912	FLYWHEEL	1	
9	09140-14008	NUT	1	
10	09160-14029	WASHER	1	
11	08341-31049	KEY	1	
12	32390-93900	RETAINER, magneto stator	2	
13	02122-06167	SCREW	4	
14	09404-06404	CLAMP	1	
15	02112-06128	SCREW	1	

FIG.12

FIG.12 (C- 4) IGNITION



REF.NO.	PART NO.	DESCRIPTION	Q'TY	REMARKS
1	32900-93901	CDI UNIT	1	
2	08322-21067	WASHER	2	
3	01107-06207	BOLT	2	
4	08321-21067	LOCK WASHER	2	
5	33510-95510	CAP, spark plug	2	model VG
6-1	09482-00339	SPARK PLUG, B6HS	2	DT9.9
6-2	09482-00342	SPARK PLUG, B7HS	2	DT15
7	09403-11307	CLAMP	1	
8	33510-22010	CAP, plug	2	model VH
9	33541-93950	SEAL, plug	2	model VH
10	33542-98000	SEAL, high tension cord	2	model VH

FIG. 13

FIG. 13 (C- 5) ELECTRICAL (1)

Q'TY

REMARKS

REF.NO.	PART NO.	DESCRIPTION	Q'TY	REMARKS
1	32800-95720	RECTIFIER ASSY	1	
2	02112-05252	SCREW	1	
3	08321-21052	LOCK WASHER	1	
4	33810-93900	CABLE ASSY, starter	1	
5	33811-96300	GROMMET, starter cable	1	
6	33820-93900	CABLE ASSY, positive terminal	1	
7	36740-93900	CASE ASSY, fuse	1	
8	33816-96300	CLAMP, two cable	1	
9	03242-06259	SCREW	1	
10	01107-06168	BOLT	1	
11	08321-21067	LOCK WASHER	1	
12	33833-95500	TUBE, trim relay cable	1	
13	36610-93901	WIRE HARNESS, ME	1	
14	37160-93910	SWITCH ASSY, start	1	
15	37861-95200	.NUT, trim switch	1	

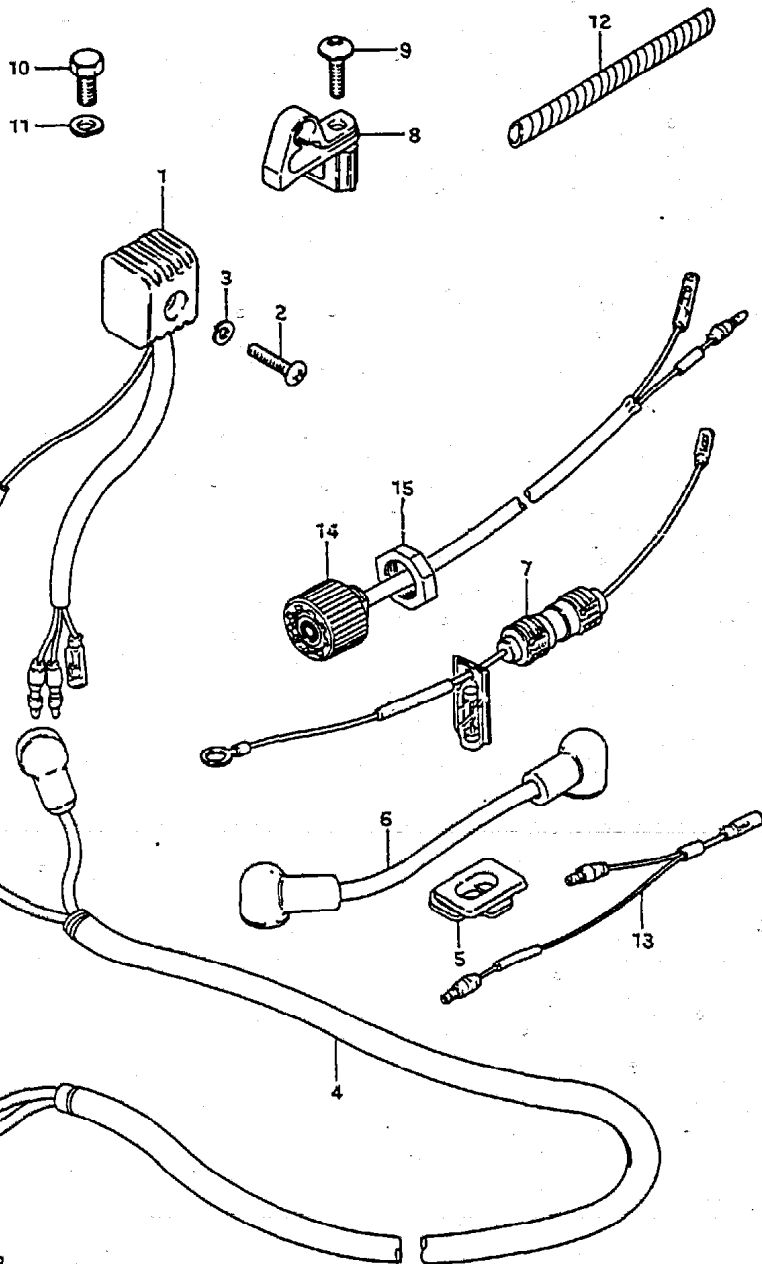


FIG. 14

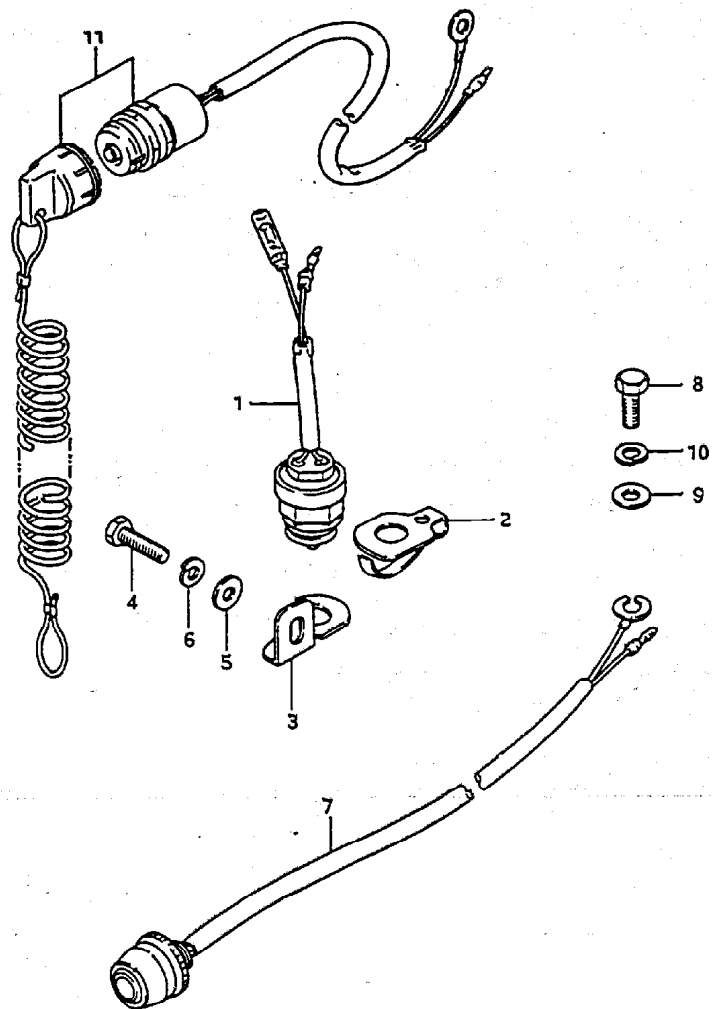


FIG. 14 (C- 6) ELECTRICAL (2)

REF.NO.	PART NO.	DESCRIPTION	Q'TY	REMARKS
1	37721-93902	SWITCH ASSY, neutral	1	
2	37725-94302	ACTUATOR, neutral switch	1	
3	37726-93901	BRACKET, neutral switch	1	
4	09100-06131	BOLT (6x12)	1	
5	09160-06090	WASHER (6.5x13x1)	1	
6	09162-06001	LOCK WASHER	1	
7	37800-93950	SWITCH ASSY, stop	1	
8	09100-06131	BOLT (6x12)	1	
9	09160-06090	WASHER (6.5x13x1)	1	
10	09162-06001	LOCK WASHER	1	
11	37820-98103	SWITCH ASSY, emergency	1	

FIG.15

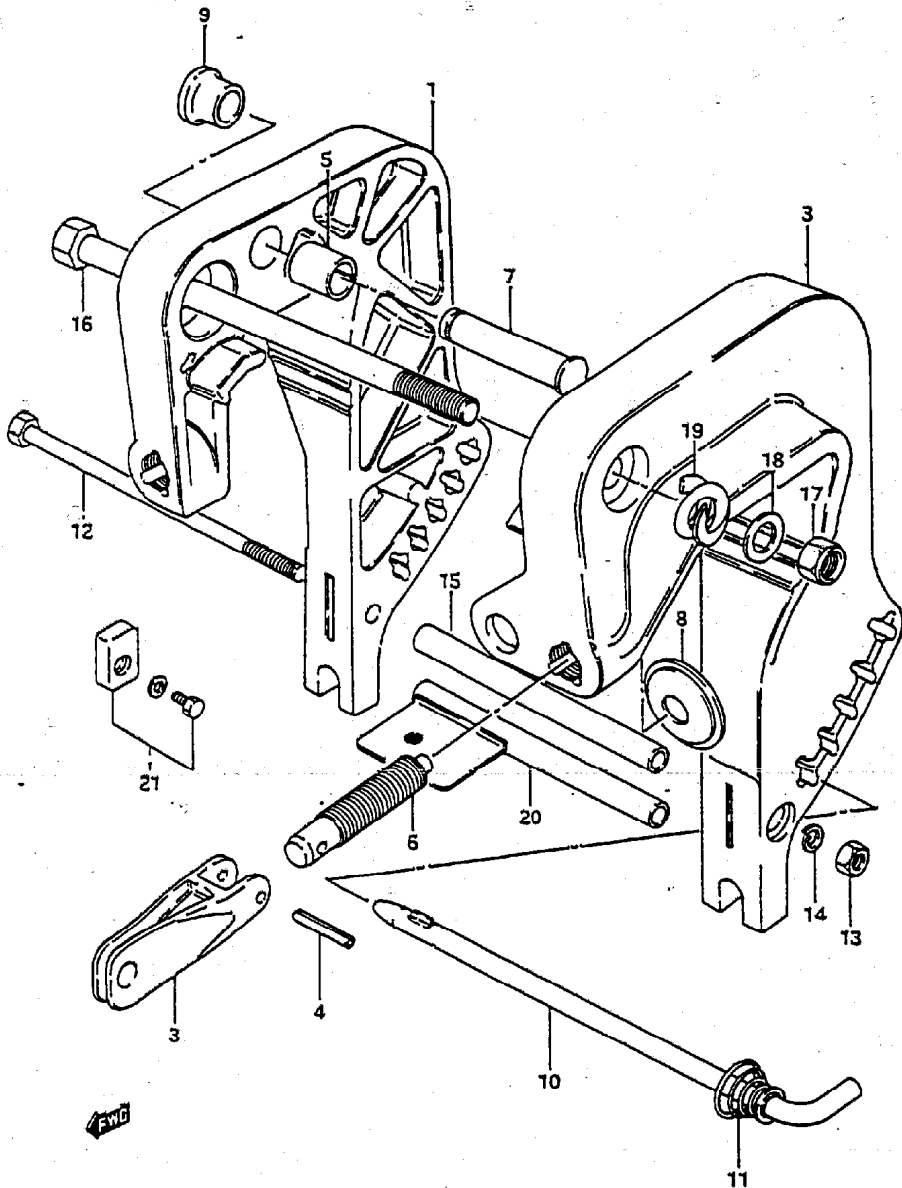


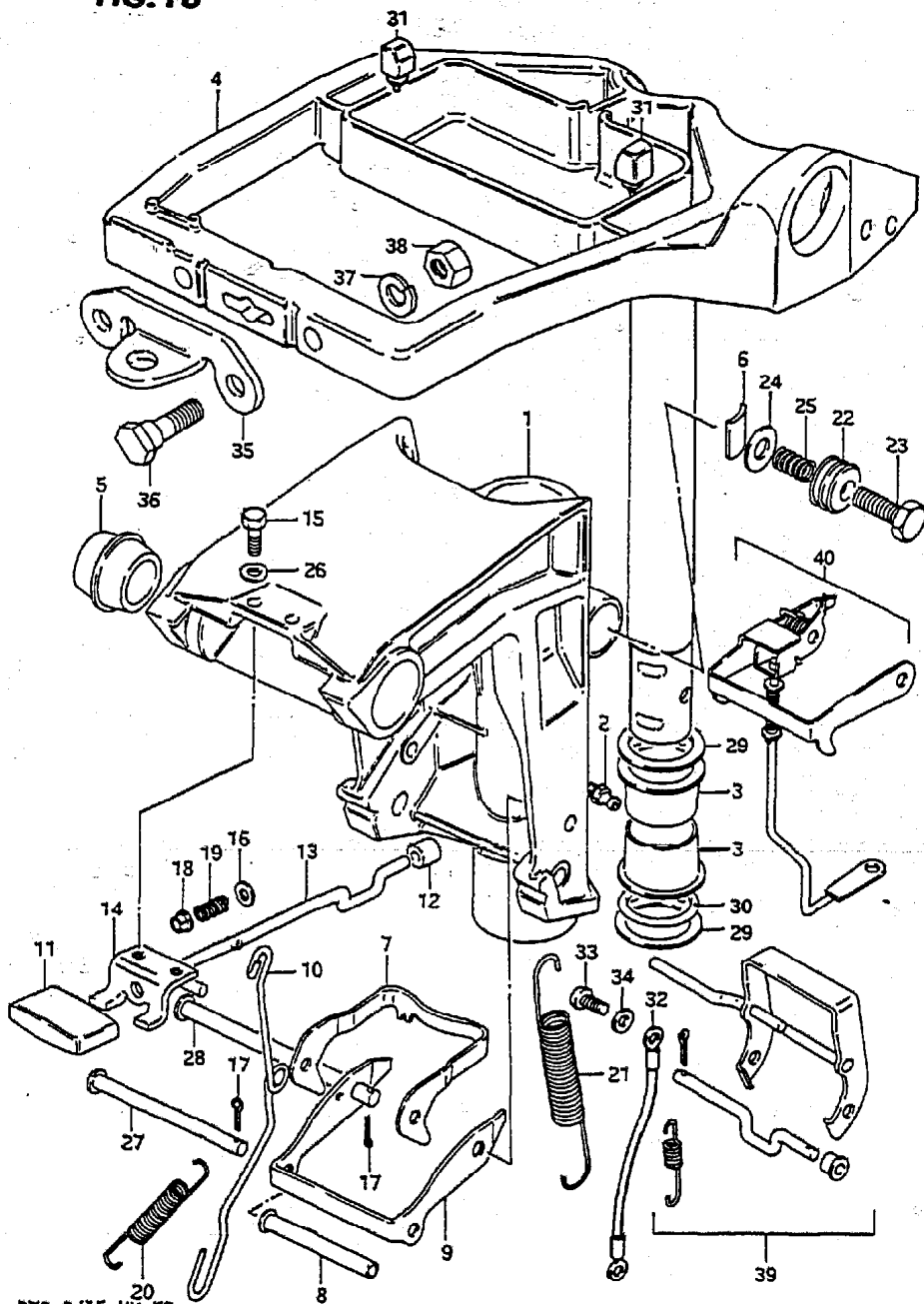
FIG.15 (C- 7) CLAMP BRACKET

Q'TY

REMARKS

REF.NO.	PART NO.	DESCRIPTION	Q'TY	REMARKS
1	41110-93920-02M	BRACKET, clamp STBD	1	
2-1	41120-93920-02M	BRACKET, clamp PORT	1	model VG
2-2	41120-93940-02M	BRACKET, clamp PORT	1	model VH
3	41212-93000-02M	HANDLE, clamp	2	
4	09205-06012	SPRING PIN	2	
5	09303-14003	BUSH	1	
6-1	41211-93910	SCREW, clamp (L:78)	2	
6-2	41211-93920	SCREW, clamp (L:90)	2	OPT
6-3	41211-93900	SCREW, clamp (L:68)	2	OPT
7	41222-93910	PIN, tilt stopper	1	
8	41213-98100	PLATE, clamp	2	
9	41221-96300	KNOB, tilt stopper	1	
10	45420-93900	PIN, tilt lock	1	
11	09441-17001	.SPRING	1	
12	09100-06105	BOLT	1	
13	09140-06020	NUT	1	
14	09162-06006	LOCK WASHER	1	
15	09180-06113	SPACER	1	model VG
16	09100-10199	BOLT	1	
17	09159-10050	NUT	1	
18	09160-10082	WASHER	1	
19	09440-22008	SPRING	1	
20	41310-93900	ROD, clamp bracket lower	1	model VH
21	55320-95310	ZINC SET, protection	1	model VH

FIG. 16



DY9.9/15 VH E3

FIG.16 (C- 8) SWIVEL BRACKET

Q'TY

REF.NO.	PART NO.	DESCRIPTION	Q'TY	REMARKS
1-1	43111-93904-02M	BRACKET, swivel	1	model VG
1-2	43111-93910-02M	BRACKET, swivel	1	model VH
2	22511-99001	NIPPLE, grease	3	
3	43711-93901	BUSH, steering	2	
4	43750-93902-02M	BRACKET, steering	1	
5	09306-10012	BUSH	2	
6	43411-93900	ADJUSTER, steering	1	
7	45231-93902	ARM, reverse lock	1	
8	45246-93902	SPACER, reverse lock arm	1	
9	45241-93901	LINK, reverse lock arm	1	
10	45252-93901	LINK, release lever	1	
11	45255-96300	KNOB, release lever	1	
12	45257-93900	BUSH, release lever	1	
13	45260-96300	LEVER, release	1	
14	45311-93900-02M	BRACKET, release lever	1	
15	09100-05011	BOLT (5x12)	2	
16	09160-04012	WASHER (4.2x10x1)	1	
17	09204-01001	COTTER PIN	2	
18	09319-04001	BUSH	1	
19	09440-04021	SPRING	1	
20	09443-05013	SPRING	1	

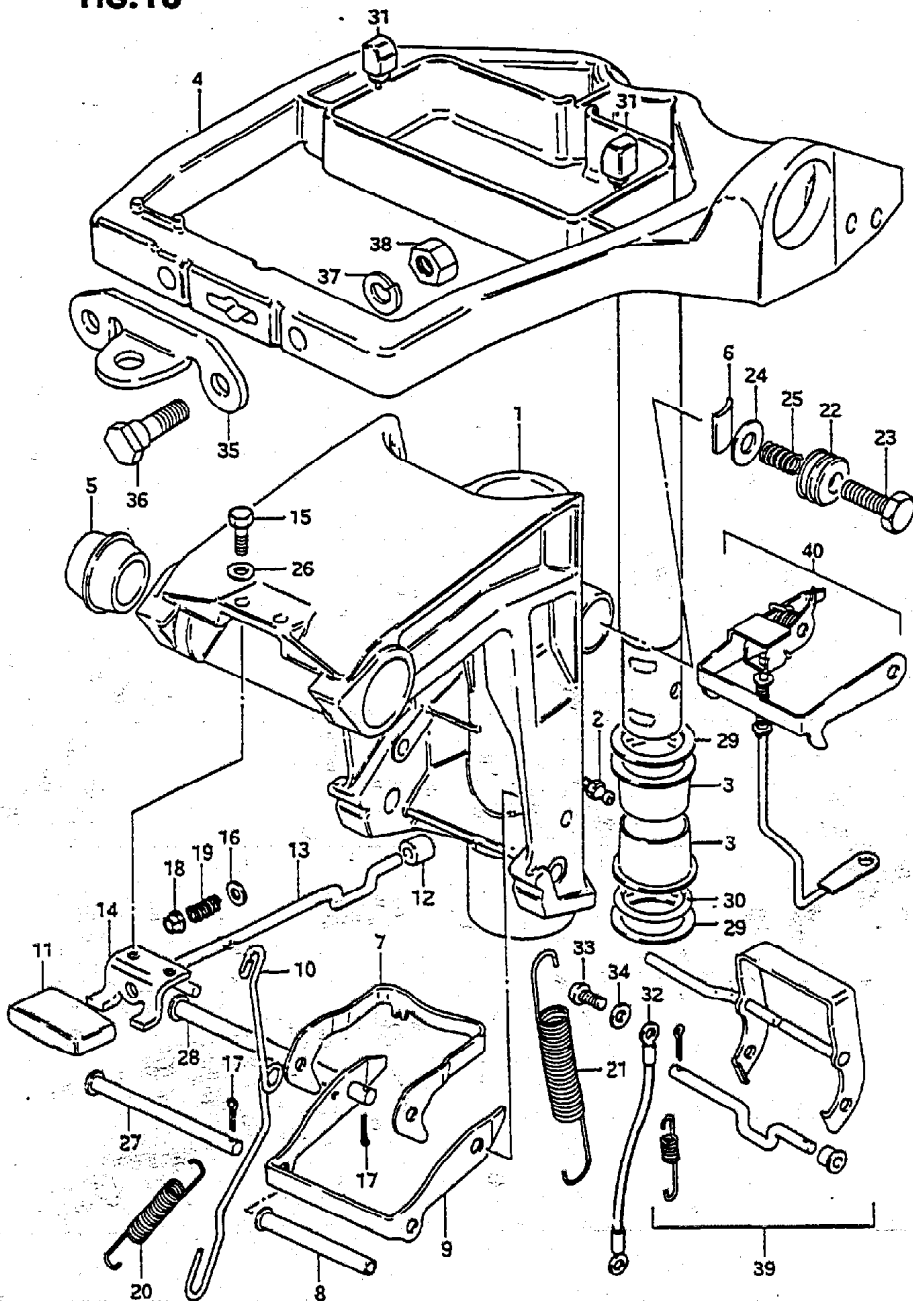
DY9.9/15 VH E3

FIG. 16

FIG.16 (C- 9) SWIVEL BRACKET

Q'TY

REMARKS



REF.NO.	PART NO.	DESCRIPTION	Q'TY	REMARKS
21	09443-11019	SPRING	2	
22	43412-93900	COVER, adjuster	1	
23	09100-08232	BOLT	1	
24	09160-08082	WASHER (8.5x16x1.2)	1	
25	09440-11022	SPRING	1	
26	09160-05010	WASHER (5.5x10x0.8)	2	
27	09200-05014	PIN	1	
28	09200-06051	PIN	1	
29	09160-27009	WASHER	2	
30	09280-27004	O RING	1	
31	43765-93900	CUSHION	2	
32	36894-95200	LEAD	1	
33	09125-05050	SCREW	2	
34	09161-05014	WASHER	2	
35	43755-93900	ATTCHMENT, bracket	1	OPT
36	09100-08224	BOLT (8x35)	2	OPT
37	09162-08003	LOCK WASHER	2	OPT
38	09140-08016	NUT	2	OPT
39	45700-93900	SHALLOW DRIVE ASSY	1	
40	45200-93901	REVERSE LOCK SET	1	OPT

DT9.9/15 VH E3

Revised Sept. 1986

DT9.9/15 VH E3

Revised Sept. 1986

FIG.17

FIG.17 (D- 2) EXHAUST TUBE

Q'TY

REF.NO.	PART NO.	DESCRIPTION	Q'TY	REMARKS
1	14211-93900	TUBE, exhaust	1	
2	14213-93900	GASKEY, exhaust tube	1	
3	09100-06121	BOLT (6x30)	4	
4	09162-06001	LOCK WASHER	4	
5	11433-93901	GASKEY, under oil seal	1	
6	52113-93901	GASKEY, drive shaft	1	

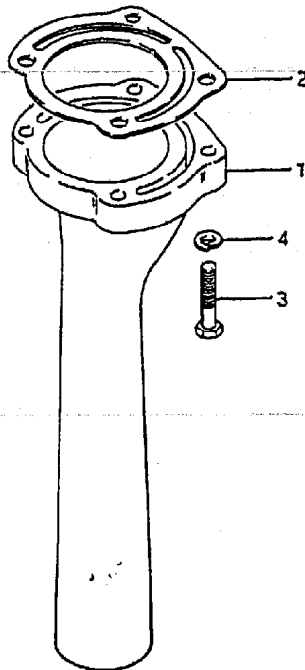
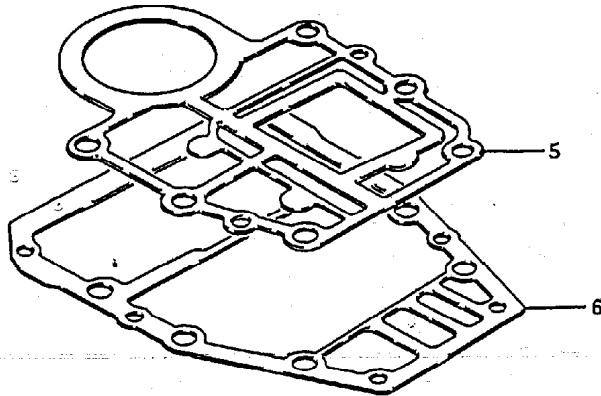


FIG. 18

FIG. 18 (D- 3) DRIVESHAFT HOUSING

Q'TY

REF.NO.	PART NO.	DESCRIPTION	Q'TY	REMARKS
1	09160-06015	WASHER (6.5x13x1)	6	
2	09162-08007	LOCK WASHER	6	
3	09100-08214	BOLT (8x50)	4	
4	09100-08197	BOLT (8x85)	2	
5-1	52111-93912-02M	HOUSING, drive shaft (S)	1	DT9.9:-623168 DT15:-617758 +52111-93913-02M W/52117-94400
5-2	52111-93913-02M	HOUSING, drive shaft (S)	1	DT9.9:623169- DT15:617759-
5-3	52111-93930-02M	HOUSING, drive shaft (S)	1	model VH
5-4	52111-93902-02M	HOUSING, drive shaft (L)	1	DT9.9:-623168 DT15:-617758 +52111-93903-02M W/52117-94400
5-5	52111-93903-02M	HOUSING, drive shaft (L)	1	DT9.9:623169- DT15:617759-
5-6	52111-93920-02M	HOUSING, drive shaft (L)	1	model VH
6-1	54121-93910	CUSHION, upper mount	2	DT9.9
6-2	54121-93900	CUSHION, upper mount	2	model VG:DT15
6-3	54121-93910	CUSHION, upper mount	2	model VH:DT15
7	54137-93901	COVER, upper mounting	2	
8-1	54130-93910	MOUNT, upper	2	DT9.9
8-2	54130-93901	MOUNT, upper	2	model VG:DT15
8-3	54121-93910	MOUNT, upper	2	model VH:DT15
9	54151-93900	MOUNT, lower thrust	1	
10-1	54210-93900-02M	COVER, lower mounting	1	model VG
10-2	54210-93910-02M	COVER, lower mounting	1	model VH
11	54125-93901	MOUNT, upper thrust reverse	1	
12-1	54167-93910	MOUNT, lower side	2	DT9.9
12-2	54167-93900	MOUNT, lower side	2	DT15
13	09100-08220	BOLT	1	
14	09100-08209	BOLT	2	
15	09100-08210	BOLT	2	
16	09140-08016	NUT	2	
17	09140-08016	NUT	1	
18	09160-08082	WASHER (8.5x16x1.2)	3	
19	09160-08084	WASHER	2	
20	09160-08083	WASHER	2	

DT9.9/15 VH E3

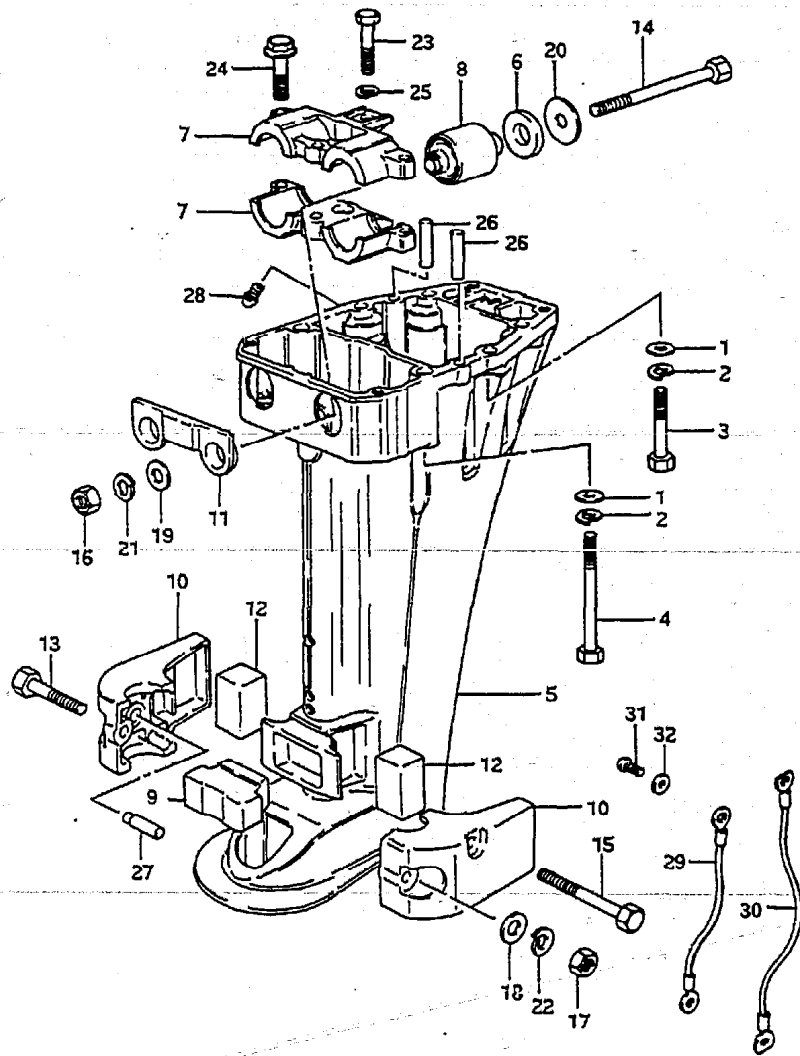
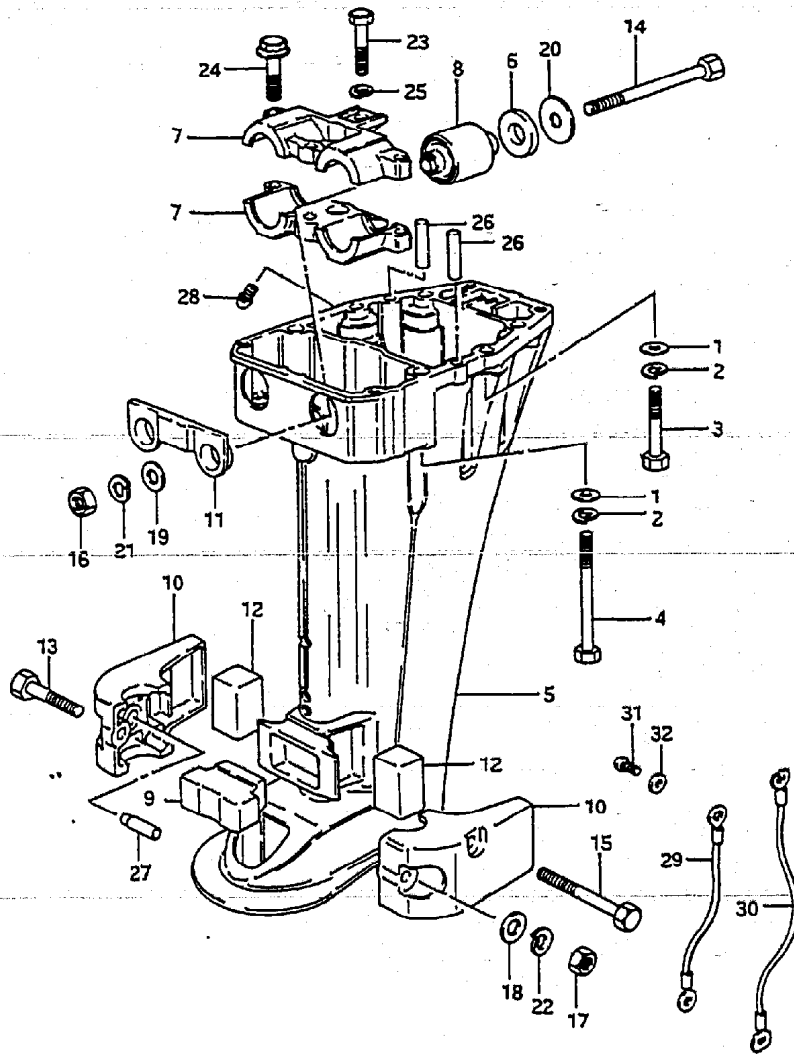


FIG. 18

FIG.18 (D- 4) DRIVESHAFT HOUSING

Q'TY

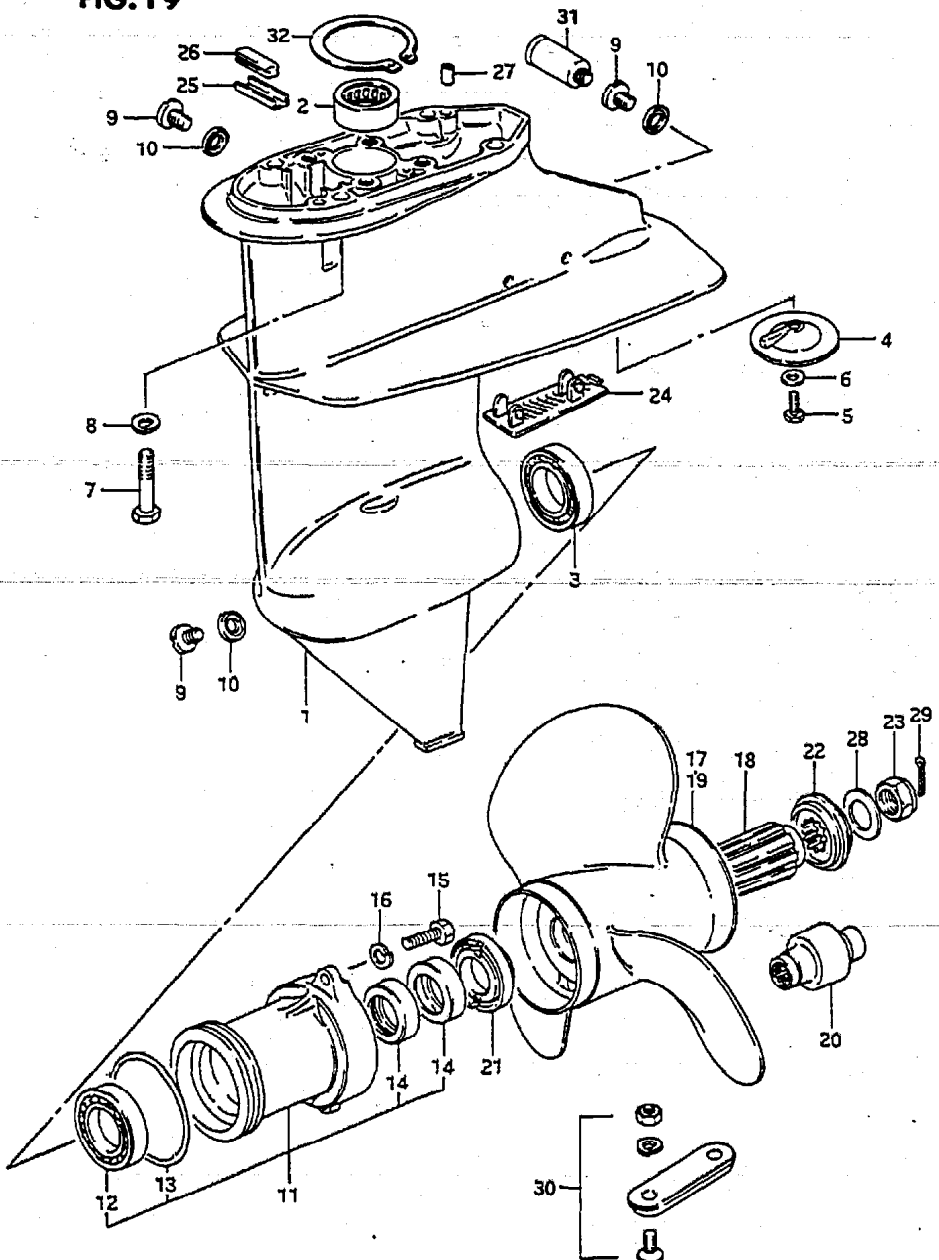
REF.NO.	PART NO.	DESCRIPTION	Q'TY	REMARKS
21	09162-08007	LOCK WASHER	2	
22	09162-08007	LOCK WASHER	3	
23	09100-06112	BOLT	1	
24	09103-08111	BOLT	2	
25	09162-06006	LOCK WASHER	1	
26	09202-06019	KNOCK PIN	2	
27	54213-33900	PIN	2	
28	52117-94400	TUBE, water	1	
29	36894-95200	LEAD	1	
30	36895-87000	LEAD	1	
31	09125-05050	SCREW	2	
32	09161-05014	WASHER	2	



FIG

FIG.19

REF.NO.	PART NO.	DESCRIPTION	Q'TY	REMARKS
1	55100-93900-02M	CASE, gear	1	
2	09263-15019	.BEARING (15x21x12)	2	
3	08115-62057	.BEARING	1	
4	55321-93900	.ZINC, protection	1	
5	09100-06115	.BOLT (6x15)	1	
6	09160-06015	.WASHER (6.5x13x1)	1	
7	09100-08232	BOLT (8x30)	4	
8	09162-08003	LOCK WASHER	4	
9	09248-10005	PLUG	3	
10	09168-10022	GASKET (10x17x1.5)	3	
11	56120-93900-02M	HOUSING, propeller shaft	1	
12	08110-60050	.BEARING	1	
13	09280-57002	.O RING	1	
14	09289-17006	.OIL SEAL (16x30x6)	2	
15	09100-06103	BOLT (6x20)	2	
16	09162-06001	LOCK WASHER	2	
17-1	58110-93900-01T	PROPELLER, 3x9 1/4x7 (M700)	1	L TYPE:STD propeller bush is not included w/prop
17-2	58110-93910-01T	PROPELLER, 3x9 1/4x8 (M800)	1	
17-3	58110-93931-01T	PROPELLER, 3x9 1/4x10 (M1000)	1	
17-4	58110-93920-01T	PROPELLER, 3x9 1/4x9 (M900)	1	
17-5	58110-93941-01T	PROPELLER, 3x9 1/4x11 (M1100)	1	
18	58120-93901	BUSH, propeller	1	S TYPE:STD propeller bush is included w/prop
19-1	58100-93703-01T	PROPELLER, 3x9 1/4x7 (M701)	1	
19-2	58100-93713-01T	PROPELLER, 3x9 1/4x8 (M801)	1	
19-3	58100-93723-01T	PROPELLER, 3x9 1/4x9 (M901)	1	
19-4	58100-93733-01T	PROPELLER, 3x9 1/4x10 (M1001)	1	
19-5	58100-93743-01T	PROPELLER, 3x9 1/4x11 (M1101)	1	
20	58120-93701	.BUSH, propeller	1	



REF.NO.	PART NO.	DESCRIPTION	Q'TY	REMARKS
21	57632-93900	STOPPER, propeller bush	1	
22	57633-93900	SPACER, propeller nut	1	
23	09159-12014	NUT	1	
24	17631-93901	FILTER, water	1	
25	55331-93901	CORE, exhaust seal	1	
26	55332-93900	RUBBER, exhaust seal	1	
27	09202-06023	KNOCK PIN	2	
28	09160-12066	WASHER (12.5x22x2.5)	1	
29	09204-02004	COYTER PIN	1	
30	55300-95500	ZINC, protection	1	OPT
31	55181-95200	ATTACHMENT, flush hose	1	OPT
32	08331-41329	CIRCLIP	1	

FIG.19

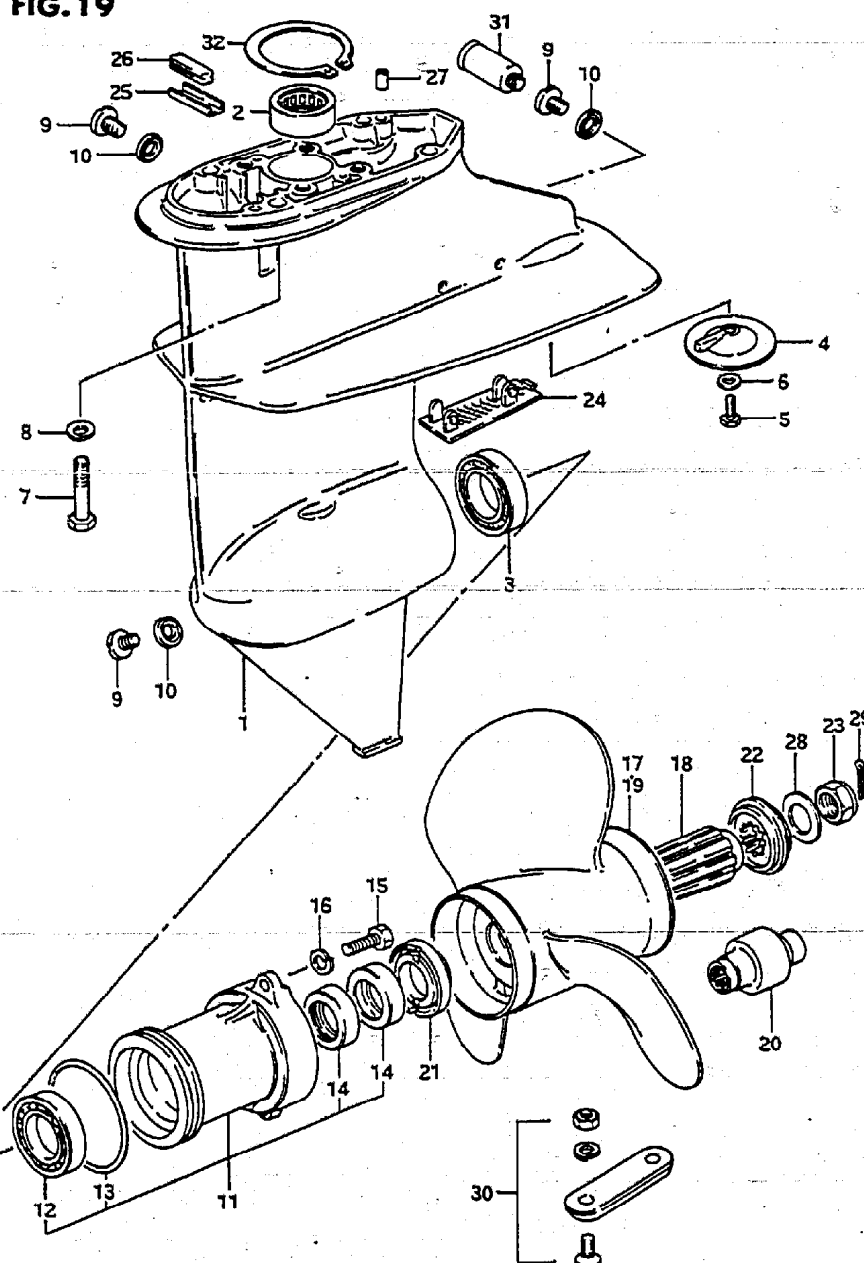
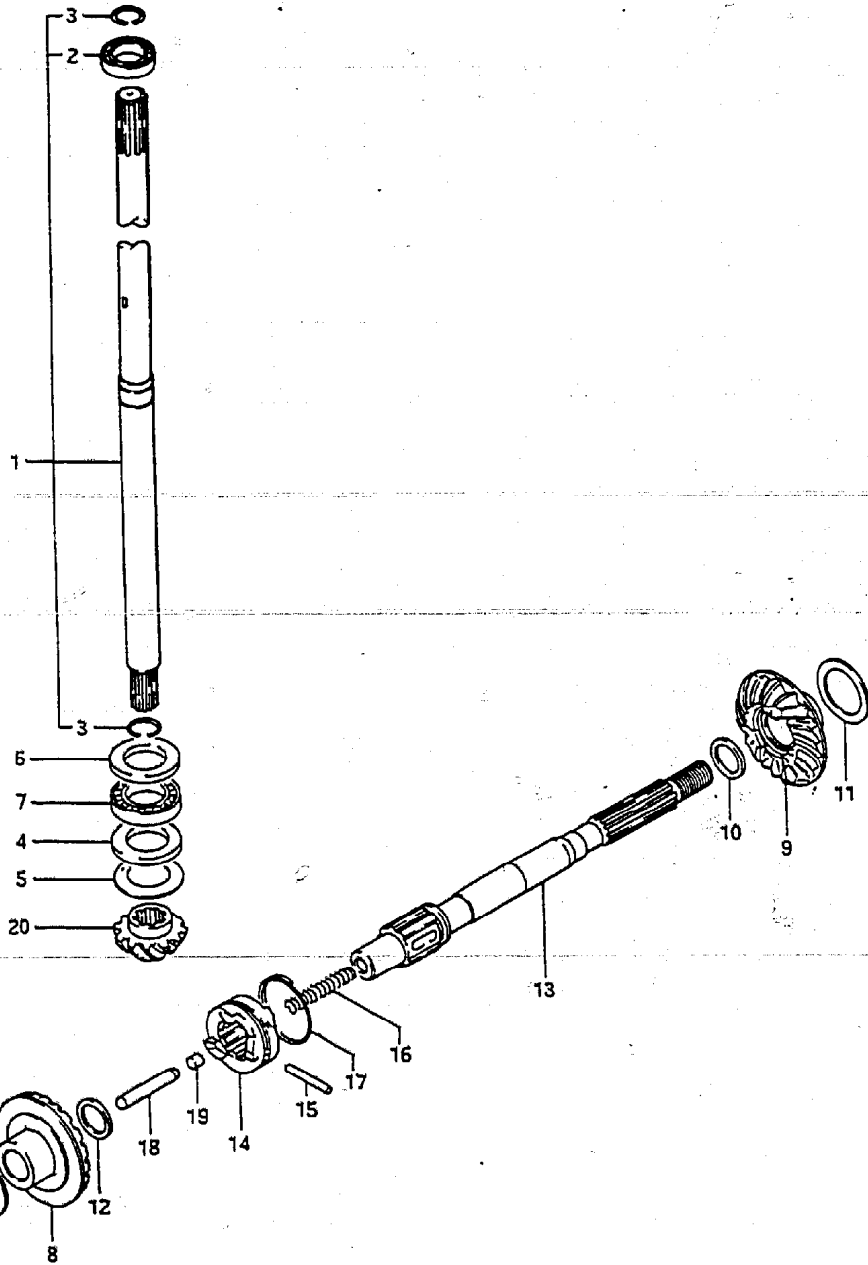


FIG. 20



REF.NO.	PART NO.	DESCRIPTION	Q'TY	REMARKS
1-1	57100-93910	SHAFT ASSY, drive (S)	1	
1-2	57100-93900	SHAFT ASSY, drive (L)	1	
2	08110-60020	.BEARING	1	
3	09380-15001	.CIRCLIP	2	
4	09160-20027	WASHER (20x35x2.75)	1	
5-1	09160-20041	SHIM (T:1.0)	1	
5-2	09160-20042	SHIM (T:1.1)	1	
5-3	09160-20043	SHIM (T:1.2)	1	
5-4	09160-20044	SHIM (T:1.3)	1	
5-5	09181-20005	SHIM (T:0.7)	1	
5-6	09181-20006	SHIM (T:0.8)	1	
5-7	09181-20007	SHIM (T:0.9)	1	
6	09160-21009	WASHER (21x35x2.75)	1	
7	09263-20024	BEARING (20x35x4.5)	1	
8	57510-93902	GEAR, forward	1	
9	57521-93902	GEAR, reverse	1	
10-1	09160-17024	WASHER (T:1.1)	1	
10-2	09160-17039	WASHER (T:1.2)	1	
10-3	09160-17025	WASHER (T:1.3)	1	
10-4	09160-17040	WASHER (T:1.4)	1	
10-5	09160-17026	WASHER (T:1.5)	1	
10-6	09160-17041	WASHER (T:1.6)	1	
10-7	09160-17027	WASHER (T:1.7)	1	
10-8	09160-17042	WASHER (T:1.8)	1	
10-9	09160-17028	WASHER (T:1.9)	1	

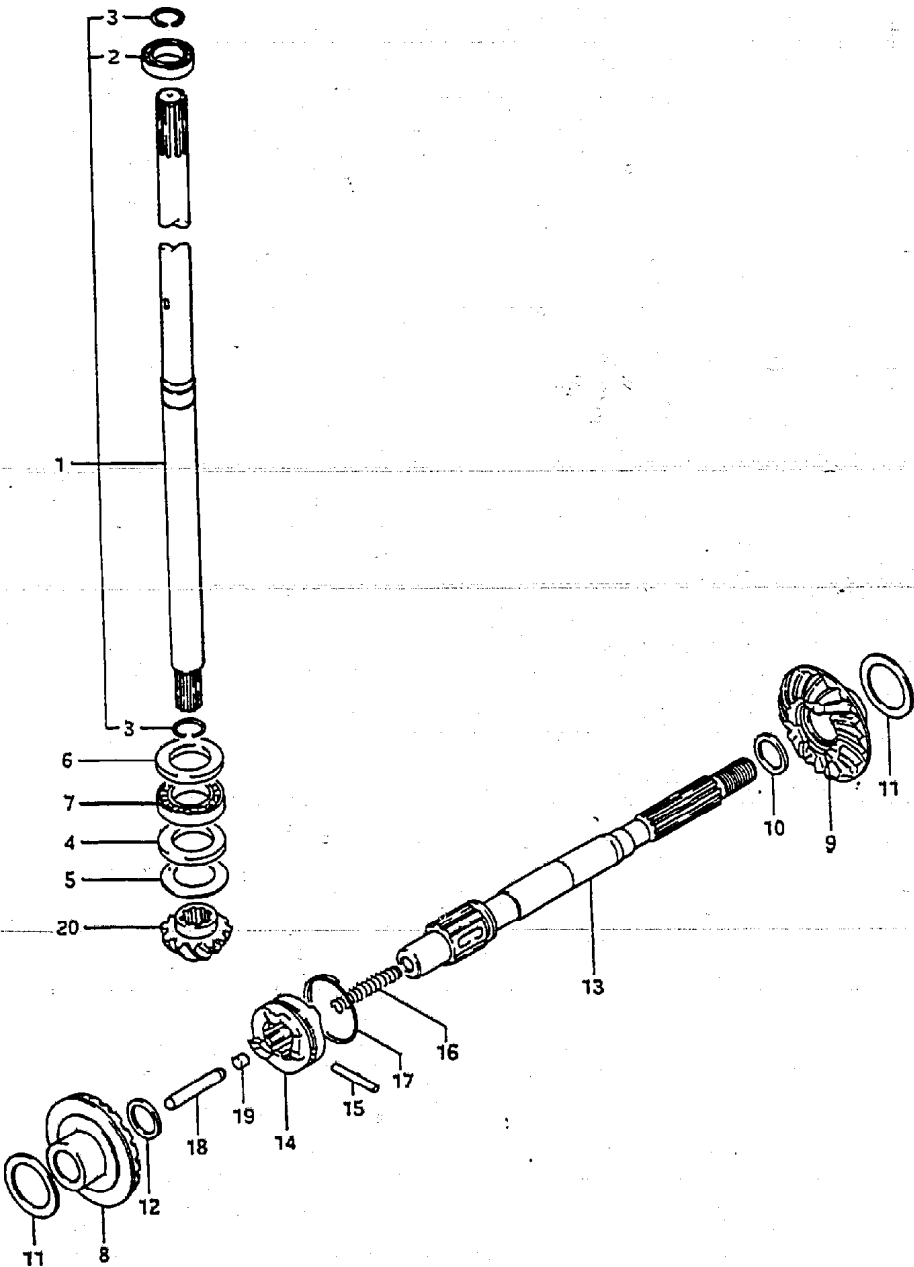
FIG.20 (D- 8) TRANSMISSION

Q'TY

REMARKS

REF.NO.	PART NO.	DESCRIPTION	Q'TY	REMARKS
11-1	09160-25040	SHIM (T:1.0)	2	
11-2	09160-25041	SHIM (T:1.1)	2	
11-3	09160-25042	SHIM (T:1.2)	2	
11-4	09160-25043	SHIM (T:1.3)	2	
11-5	09181-25023	SHIM (T:0.7)	2	
11-6	09181-25024	SHIM (T:0.8)	2	
11-7	09181-25025	SHIM (T:0.9)	2	
12	08211-15222	THRUST WASHER (T:1.5)	1	
13	57610-93901	SHAFT, propeller	1	
14	57621-93902	SHIFTER, clutch dog	1	
15	09202-04015	PIN	1	
16	09440-05027	SPRING	1	
17	09440-32008	SPRING	1	
18	57631-93901	ROD, push	1	
19	57632-98500	PIN	1	
20	57311-93901	PINION	1	

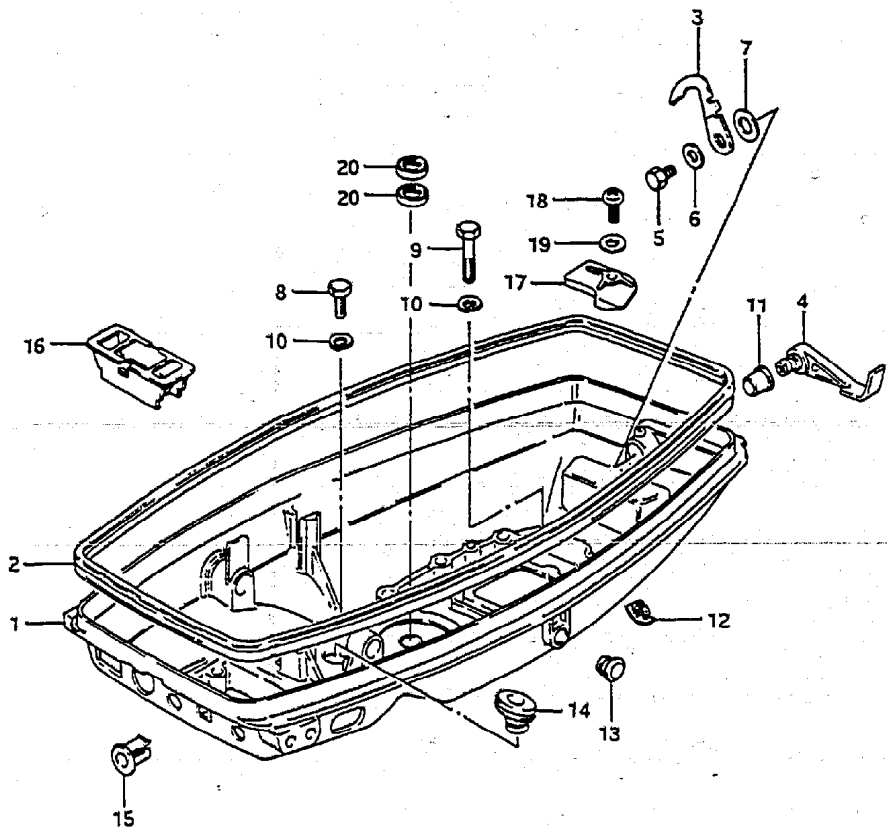
FIG.20



DT9.9/15 VH E3

DT9.9/15 VH E3

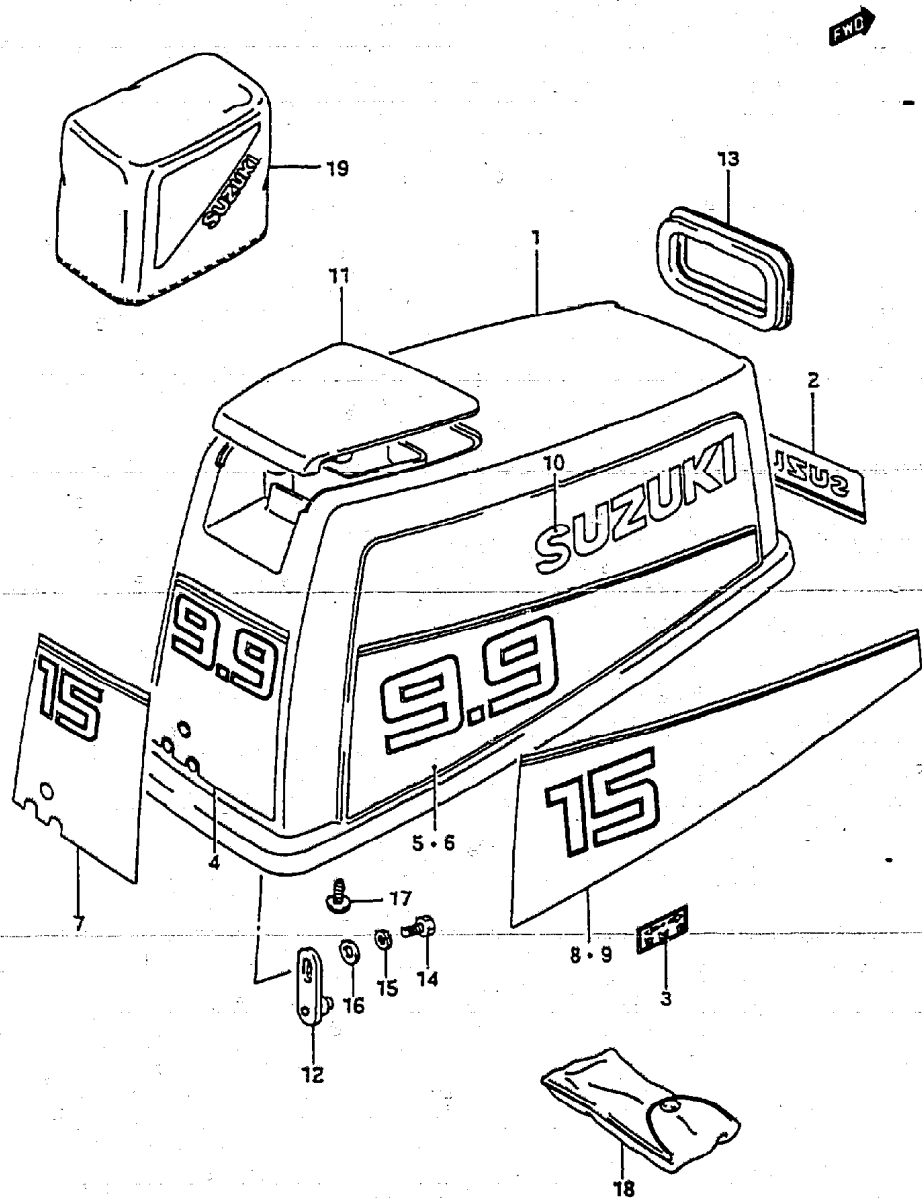
FIG.21



REF.NO.	PART NO.	DESCRIPTION	Q'TY	REMARKS
1	61111-93904-02M	COVER, engine under	1	
2	61112-93901	RUBBER, under cover	1	
3	61631-96301	RACK, under cover	1	
4	61633-93900-02M	LEVER, hook	1	
5	01107-06102	BOLT	1	
6	08322-21062	WASHER	1	
7	09164-13005	WASHER	1	
8	01107-06252	BOLT	2	
9	01107-06352	BOLT (6x35)	2	
10	08321-21062	LOCK WASHER	4	
11	09306-13002	BUSH	1	
12	61139-96301	CAP, drain	1	
13	09250-10012	CAP	1	
14	23131-93900	BOOT, clutch rod	1	
15	13632-93900	GROMMET, choke knob	1	
16	61117-93911	COVER, air intake	1	
17	61138-93900	COVER, water	1	
18	02112-06122	SCREW	1	
19	08321-21062	WASHER	1	
20	09282-12002	OIL SEAL (12.8x25x7)	2	

FIG. 22

FIG. 22 (D-10) ENGINE COVER



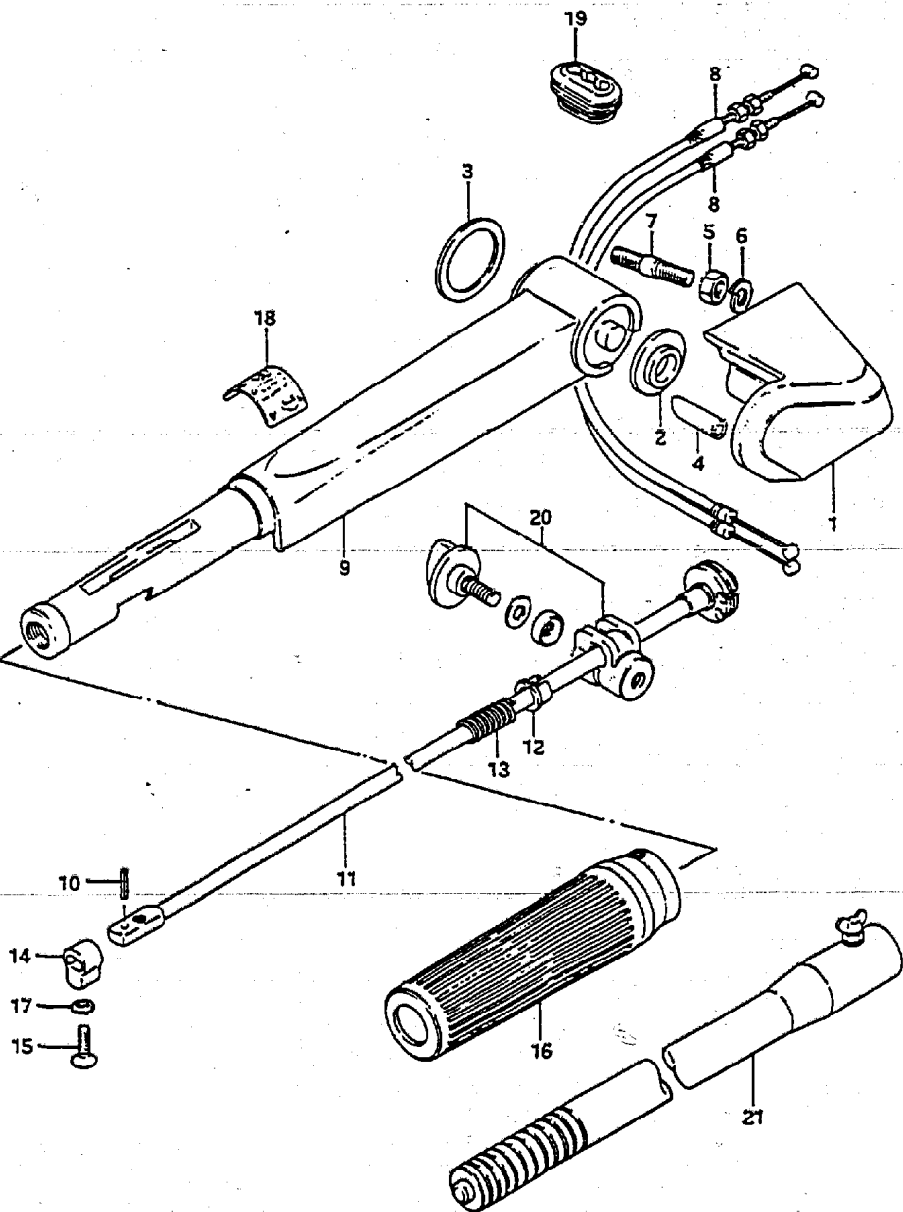
REF.NO.	PART NO.	DESCRIPTION	Q'TY		REMARKS
			9.9	15	
1-1	61402-93860-02M	COVER SET, engine	1	-	
1-2	61402-93870-02M	COVER SET, engine	-	1	
2	61422-93930-70G	.MARK, emblem front	1	1	
3	21131-96003	.MARK, clutch shift	1	1	
4	61435-93930-70G	.MARK, emblem rear (Gold+Black)	1	-	
5	61443-93930-26G	.DECAL, cover STBD (Black)	1	-	
6	61453-93930-26G	.DECAL, cover PORT (Black)	1	-	
7	61435-93940-70G	.MARK, emblem rear (Gold+Black)	-	1	
8	61443-93940-26G	.DECAL, cover STBD (Black)	-	1	
9	61453-93940-26G	.DECAL, cover PORT (Black)	-	1	
10	61441-96310	.EMBLEM, SUZUKI	2	2	
11	61431-93901-02M	.HANDLE, tilt up	1	1	
12	61610-96302	.FASTENER	1	1	
13	61622-93901	.SEAL, recoil starter	1	1	
14	01107-06122	.BOLT	1	1	
15	08321-21062	.LOCK WASHER	1	1	
16	08322-21062	.WASHER	1	1	
17	03242-06169	.SCREW	3	3	
18	09800-81800	TOOL SET	1	1	
19	68110-93010	COVER, weather	1	1	OPT

FIG. 23

FIG. 23 (D-11) HANDLE

Q'TY

REF.NO.	PART NO.	DESCRIPTION	Q'TY	REMARKS
1	63121-93900-02M	COVER, tiller handle	1	
2	63114-94300	SPACER, handle cover	1	
3	63115-96301	SPACER	1	
4	63117-96300	COVER, stop switch wire	1	
5	09140-08016	NUT	2	
6	09162-08007	LOCK WASHER	2	
7	09108-08077	STAND BOLT	2	
8	63610-96320	CABLE ASSY, throttle	2	
9	63111-96311-02M	HANDLE, tiller	1	
10	63227-93200	PIN, handle rod	1	
11	63220-96300	ROD, handle	1	
12	63225-93200	BUSH, handle rod	1	
13	09440-12027	SPRING	1	
14	63223-93201	STOPPER, handle rod	1	
15	09126-06006	SCREW	1	
16	63210-93901	GRIP HANDLE	1	
17	09163-06001	LOCK WASHER	1	
18	63215-93400	MARK, handle	1	
19	63625-93900	GROMMET, throttle cable	1	
20	63240-96300	ADJUSTER SET, handle grip	1	
21	63300-93900	BAR ASSY, extension	1	OPT



DT9.9/15 VH E3

D11

FIG. 24

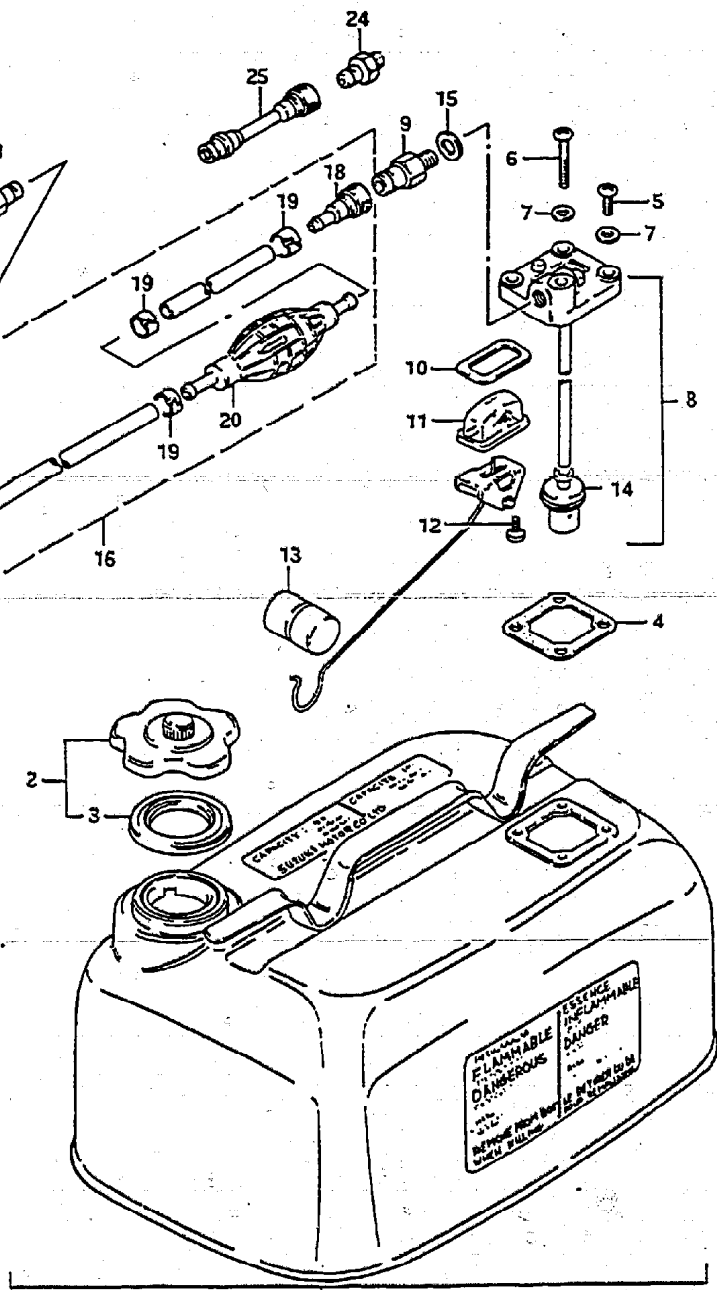


FIG. 24 (D-12) FUEL TANK

Q'TY

REMARKS

REF. NO.	PART NO.	DESCRIPTION	Q'TY	REMARKS
1	65000-95201	TANK SET, fuel (23L)	1	
2	65510-98507	.CAP ASSY, separate tank	1	
3	65561-98502	..GASKET, tank cap	1	
4	65871-93010	.GASKET, fuel gauge	1	
5	02112-06162	..SCREW	3	
6	02112-06402	..SCREW	1	
7	09168-06002	.GASKET (6x11.8x1.5)	4	
8	65850-95506	.GAUGE ASSY, fuel	1	
9	65740-95500	..CONNECTOR, male fuel	1	00:13
10	65854-93001	..GASKET	1	
11	65853-93001	..STRAINER, fuel gauge	1	
12	02112-04102	..CREW	2	
13	65864-95200	..FLOAT	1	
14	65830-95500	..FILTER	1	
15	09168-12001	..GASKET (12.5x20x1)	1	
16	65700-95205	HOSE ASSY, fuel	1	
17	65750-98505	.CONNECTOR, female fuel	1	ID:11
18	65750-93000	.CONNECTOR, female fuel	1	ID:13
19	65781-98500	.CLIP	4	
20	65770-99702	.PUMP, squeeze	1	
21	65720-98520	CONNECTOR, female fuel	1	00:11
22	08310-22102	NUT	1	
23	08321-21102	LOCK WASHER	1	
24	65720-98590	CONNECTOR, male fuel	1	OPT,00:11
25	65700-95271	HOSE, fuel joint	1	OPT,00:11/ID:13

FIG. 25

Q'TY

REF.NO.	PART NO.	DESCRIPTION	REMARKS
1	31101-93900	MOTOR SET, starter	1
2	33800-93900	SWITCH, starter/cable set	1
3	32102-93912	FLYWHEEL	1

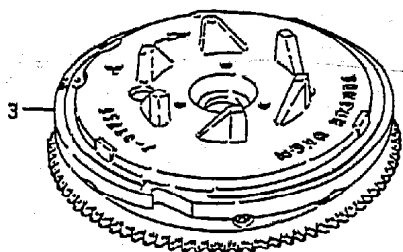
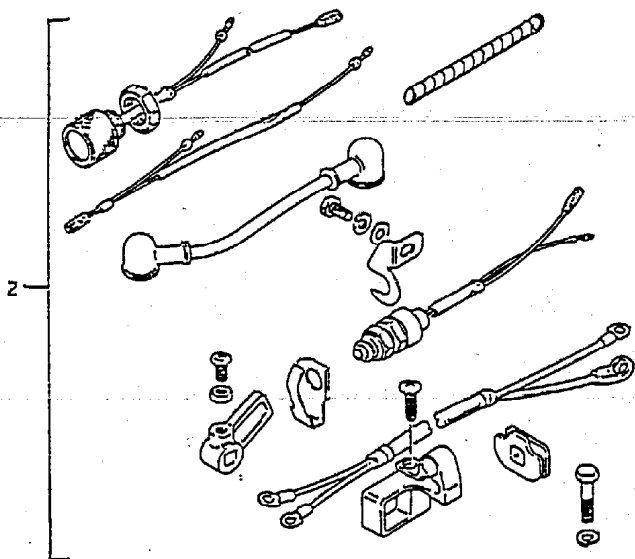
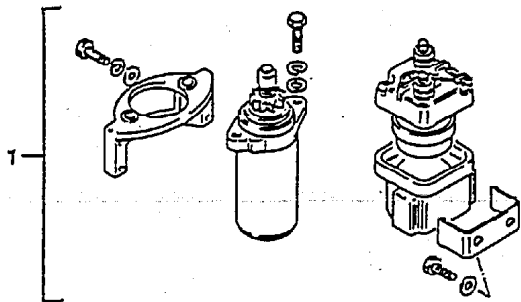


FIG. 26

FIG. 26 (E- 3) OPTIONAL : ELECTRICAL (2)

REF.NO.	PART NO.	DESCRIPTION	Q'TY	REMARKS
1	32200-93901	COIL SET, lighting	1	
2	32801-93901	RECTIFIER SET	1	

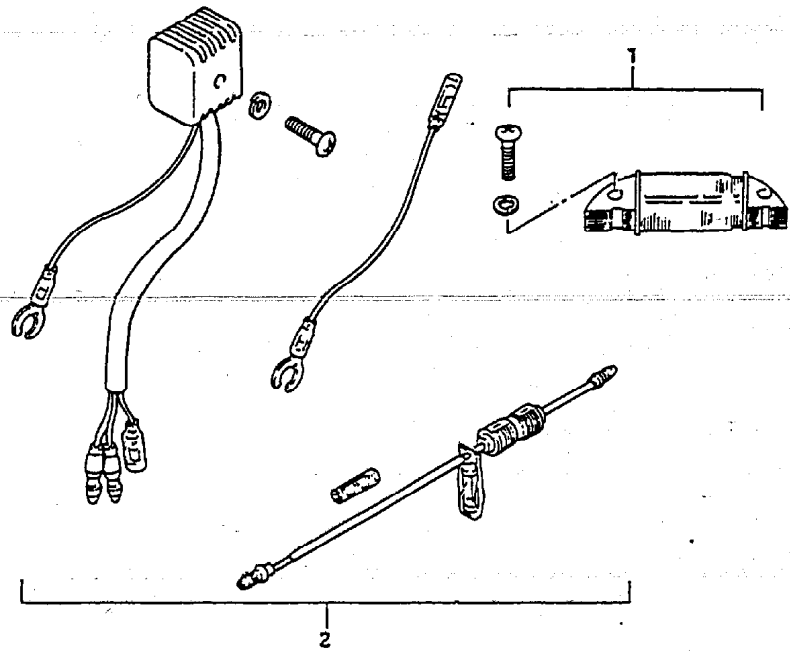


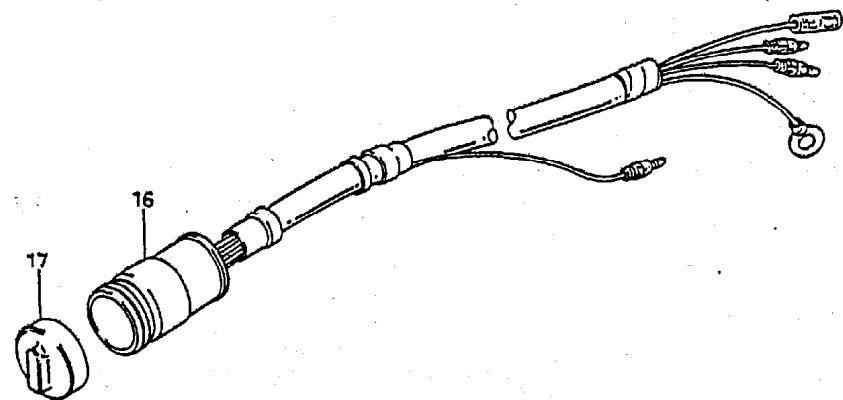
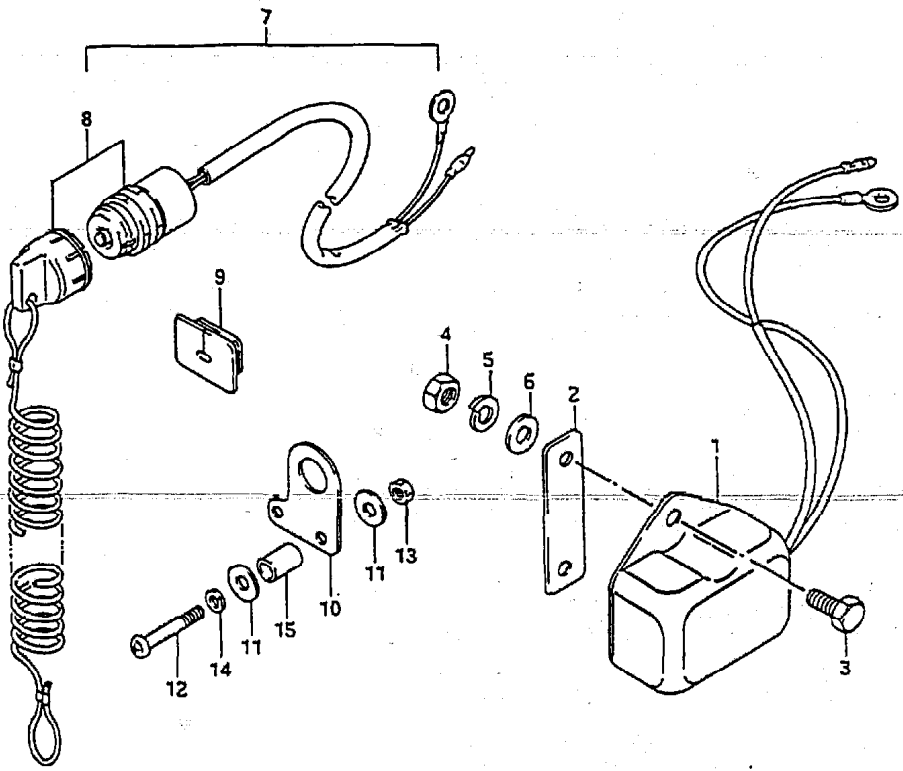
FIG. 27

FIG.27 (E- 4) OPTIONAL : ELECTRICAL (3)

Q'TY

REMARKS

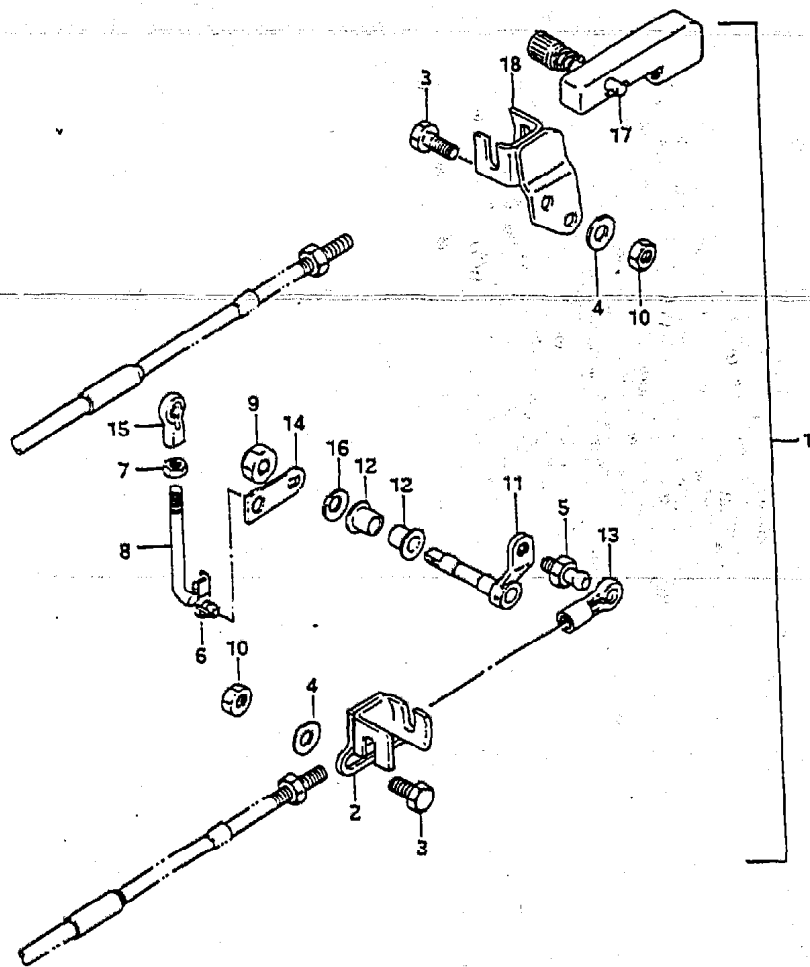
REF.NO.	PART NO.	DESCRIPTION	Q'TY	REMARKS
1	32500-95722	REGULATOR ASSY, voltage	1	
2	32590-93900	STAY, voltage	1	
3	01107-06127	BOLT	2	
4	08310-11067	NUT	2	
5	08321-21067	LOCK WASHER	2	
6	08322-21067	WASHER	2	
7	37802-93910	SWITCH SET, emergency	1	
8	37820-98110	.SWITCH ASSY, emergency	1	
9	37824-93900	.GROMMET	1	
10	37950-93901	.BRACKET, emergency	1	
11	09160-04016	.WASHER	2	
12	02112-04302	.SCREW	2	
13	08310-11042	.NUT	2	
14	08321-21042	.LOCK WASHER	2	
15	09343-04109	.SPACER	1	
16	36630-93901	WIRING HARNESS ASSY	1	
17	36631-94300	.CAP	1	



DT9.9/15 VH E3

FIG. 28

FIG. 28 (E- 5) OPTIONAL : REMOTE CONTROL PARTS



REF.NO.	PART NO.	DESCRIPTION	Q'TY	REMARKS
1	67130-93901-02M	REMOTE CONTROL PARTS ASSY	1	
2	67340-93900	.HOLDER, remo-con cable	1	
3	09100-06115	.BOLT (6x16)	4	
4	09160-06015	.WASHER (6.5x18x1.5)	4	
5	09119-06047	.PAWL PIVOT	1	
6	09209-05017	.PIN	1	
7	09140-05001	.NUT	1	
8	67413-93900	.ROD, remo-con throttle	1	
9	09159-08026	.NUT	1	
10	09140-06004	.NUT	4	
11	67410-93500-02M	.LEVER, remo-con throttle	1	
12	09306-08003	.BUSH	2	
13	67466-95200	.CONNECTOR, remo-con throttle	1	
14	67417-93900	.ARM, remo-con throttle	1	
15	19131-95502	.CONNECTOR, throttle lever	1	
16	09164-08017	.WASHER	1	
17	67440-93900	.GUIDE, clutch cable	1	
18	67270-93910	.HOLDER REMO-CON CABLE	1	

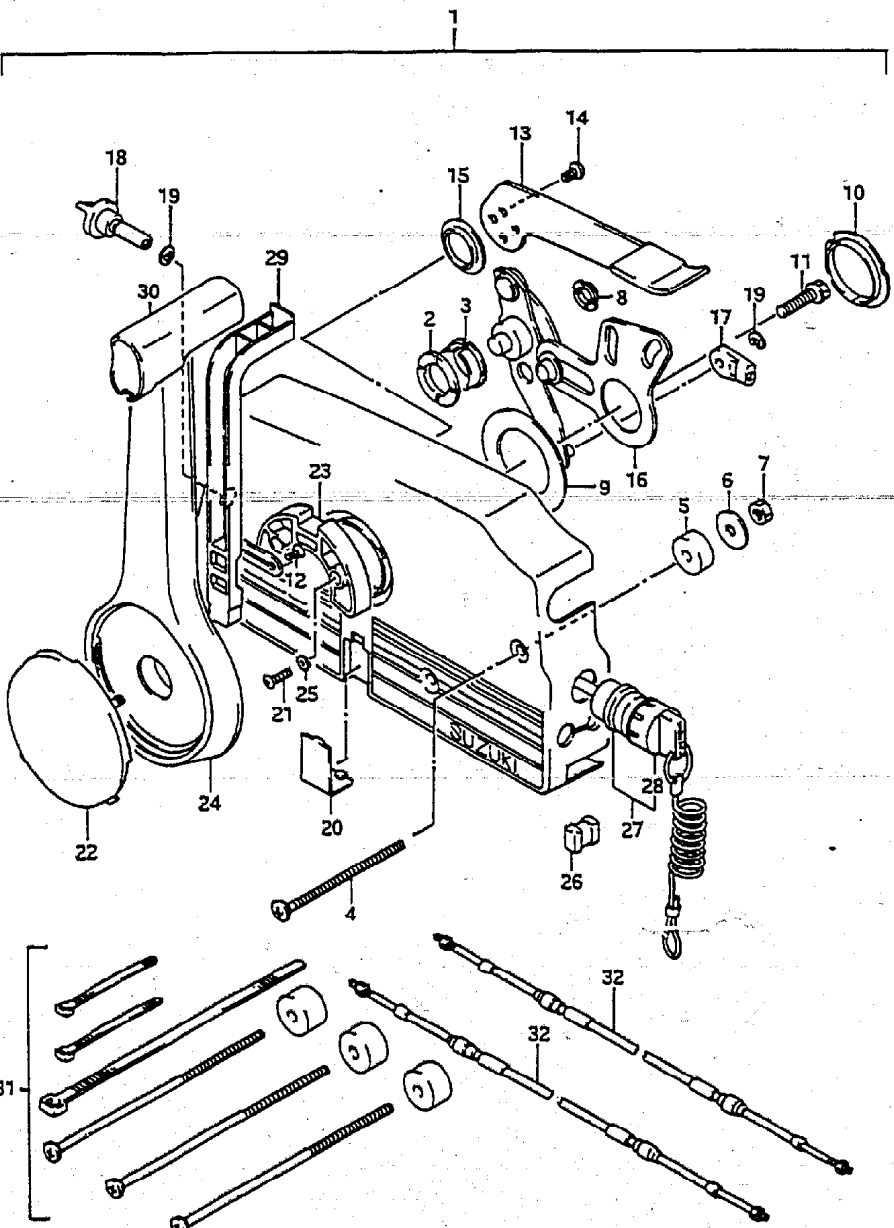
FIG. 29

FIG. 29 (E- 6) OPTIONAL : REMOTE CONTROL (1)

Q'TY

REMARKS

REF.NO.	PART NO.	DESCRIPTION	Q'TY	REMARKS
1	67200-93960	REMOTE CONTROL BOX ASSY	1	
2	67232-95600	.BUSH	1	
3	67232-95620	.BUSH	1	
4	67296-95600	.SCREW	3	
5	67294-95600	.SPACER	3	
6	67288-94310	.WASHER	3	
7	09140-06004	.NUT	3	
8	67232-95610	.BUSH	2	
9	67253-95600	.WASHER	1	
10	67252-95600	.BUSH	2	
11	09100-08232	.BOLT	1	
12	67296-94300	.SCREW	2	
13	67241-95650	.LEVER, free throt	1	
14	09126-05003	.SCREW	2	
15	67243-95600	.BUSH	1	
16	67220-95600	.PLATE ASSY	1	
17	67275-95600	.END, cable	2	
18	67223-95600	.KNOB, brake ADJ	1	
19	67292-94300	.E RING	3	
20	67267-95610	.COVER, wire	1	
21	67296-95610	.SCREW	7	
22	67257-95610	.CAP, lever	1	
23	67256-95600	.HOLDER, neut lock	1	
24	67251-95650	.LEVER, handle	1	



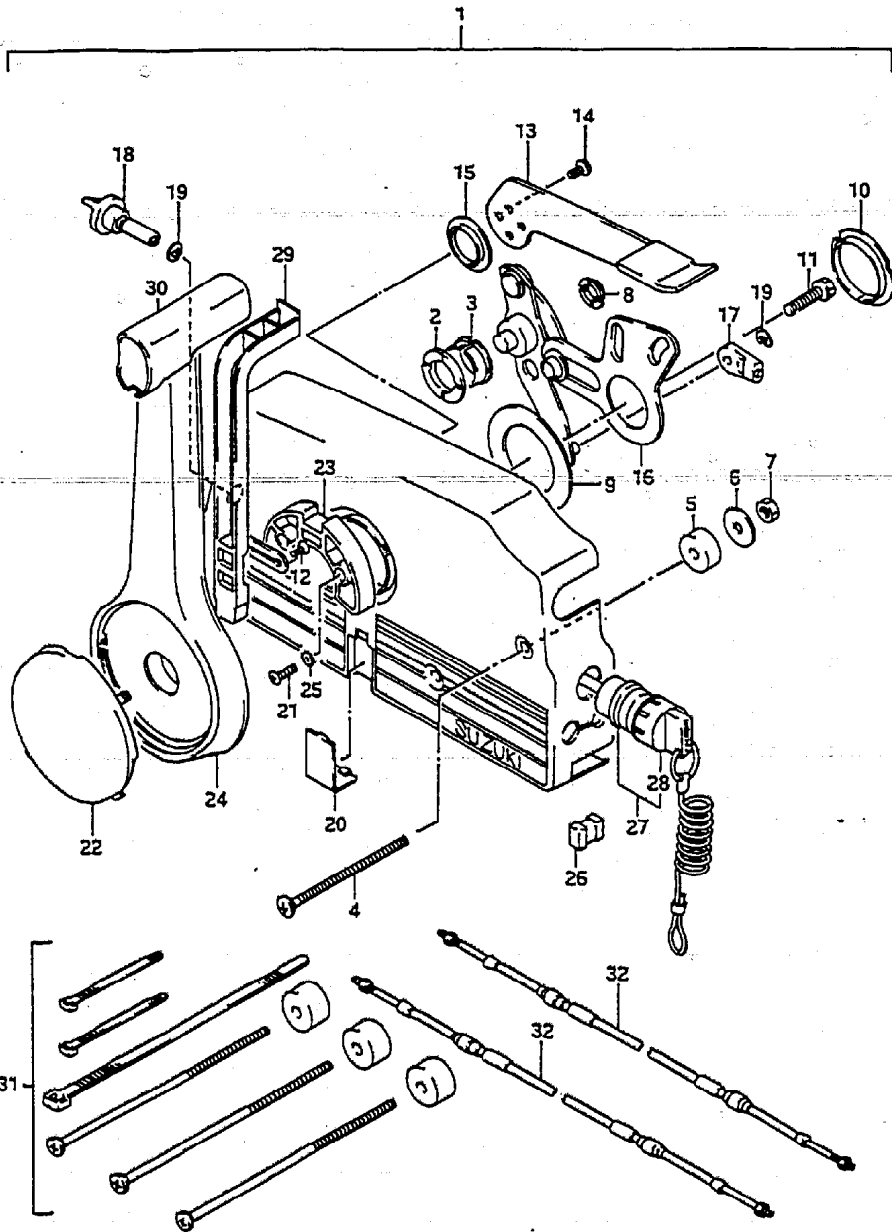
DT9.9/15 VH E3

FIG. 29

FIG.29 (E- 7) OPTIONAL : REMOTE CONTROL (1)

Q'TY

REF.NO.	PART NO.	DESCRIPTION	REMARKS
25	67297-95600	.WASHER	2
26	67273-95600	.SPACER	1
27	37820-94402	.SWITCH ASSY, emergency	1
28	37823-94400	..CAP & ROPE	1
29	67255-95600	.ARM, neutral lock	1
30	67261-95610	.GRIP	1
31	67340-95600	ATTACHMENT, twin remo-con kit	1
32-1	67320-95500	CABLE ASSY, remocon 6F (1.8M)	2
32-2	67320-95510	CABLE ASSY, remocon 7F (2.1M)	2
32-3	67320-95520	CABLE ASSY, remocon 8F (2.4M)	2
32-4	67320-95530	CABLE ASSY, remocon 9F (2.7M)	2
32-5	67320-95540	CABLE ASSY, remocon 10F (3.1M)	2
32-6	67320-95550	CABLE ASSY, remocon 11F (3.4M)	2
32-7	67320-95560	CABLE ASSY, remocon 12F (3.7M)	2
32-8	67320-95570	CABLE ASSY, remocon 13F (4.0M)	2
32-9	67320-95580	CABLE ASSY, remocon 14F (4.3M)	2
32-10	67320-95590	CABLE ASSY, remocon 15F (4.6M)	2
32-11	67320-95600	CABLE ASSY, remocon 16F (4.9M)	2
32-12	67320-95610	CABLE ASSY, remocon 17F (5.2M)	2
32-13	67320-95620	CABLE ASSY, remocon 18F (5.5M)	2
32-14	67320-95630	CABLE ASSY, remocon 19F (5.8M)	2
32-15	67320-95640	CABLE ASSY, remocon 20F (6.1M)	2
32-16	67320-95650	CABLE ASSY, remocon 22F (6.7M)	2



DT9.9/15 VH E3

DT9.9/15 VH E3

FIG.30

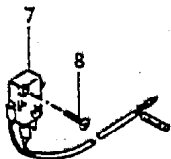
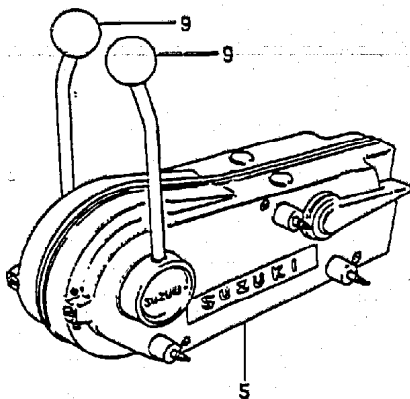
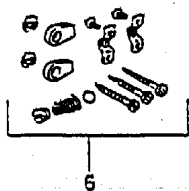
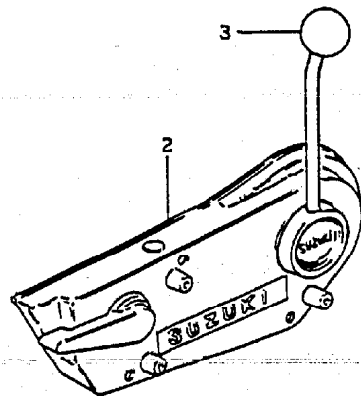
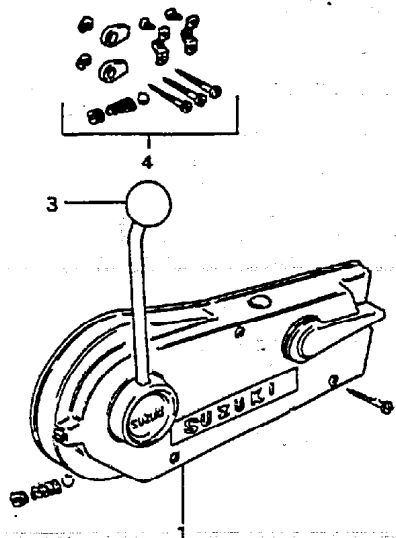


FIG.30 (E- 8) OPTIONAL : REMOTE CONTROL (2)

Q'TY

REF.NO.	PART NO.	DESCRIPTION	Q'TY	REMARKS
1	67200-95203	BOX ASSY, remo-con STBD	1	ML Remote Control Box
2	67200-95213	BOX ASSY, remo-con PORT	1	
3	67214-95200	.KNOB	1	
4	67300-95810	.HOLDER SET, cable	1	
5	67200-95871	BOX ASSY, remo-con	1	
6	67300-95810	.HOLDER SET, cable	1	
7	37721-95500	.SWITCH ASSY, neutral	2	
8	02112-03128	.SCREW	2	
9	67214-95200	.KNOB	2	

FIG.31

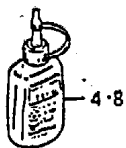
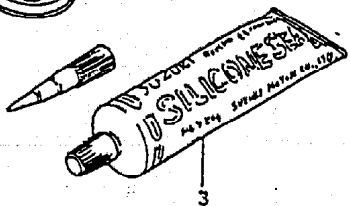
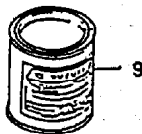
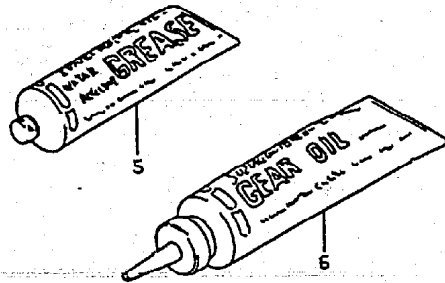
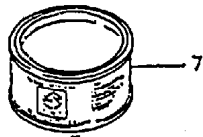
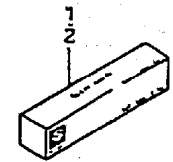


FIG.31 (E- 9) OPTIONAL

REF.NO.	PART NO.	DESCRIPTION	Q'TY	REMARKS
1	99000-31030	GASKET, liquid No.4	1	100g
2	99000-31050	SUZUKI BOND, No.1	1	100g
3	99000-31120	SUZUKI SILICON SEAL	1	50g
4	99000-32050	THREAD LOCK CEMENT, super	1	50g
5-1	99000-25160	GREASE, water resistant	1	250g
5-2	99000-25170	GREASE, water resistant	1	50g
6	99000-22540	GEAR OIL, outboard motor	1	400cc
7	99000-25010	SUZUKI SUPER GREASE	1	450g
8	99000-32020	THREAD LOCK CEMENT, super	1	50g,103Q
9-1	99000-10109-01T	PAINT (FRANCOIS WHITE)	1	90g
9-2	99000-10209-02M	PAINT (ARCTIC SILVER)	1	90g